

Hybrid Couplers 3 dB, 90°

Applications

- Microstrip Circuits
- Dividers/Combiners
- Switch Networks
- Balanced Detectors
- Antenna Feeds

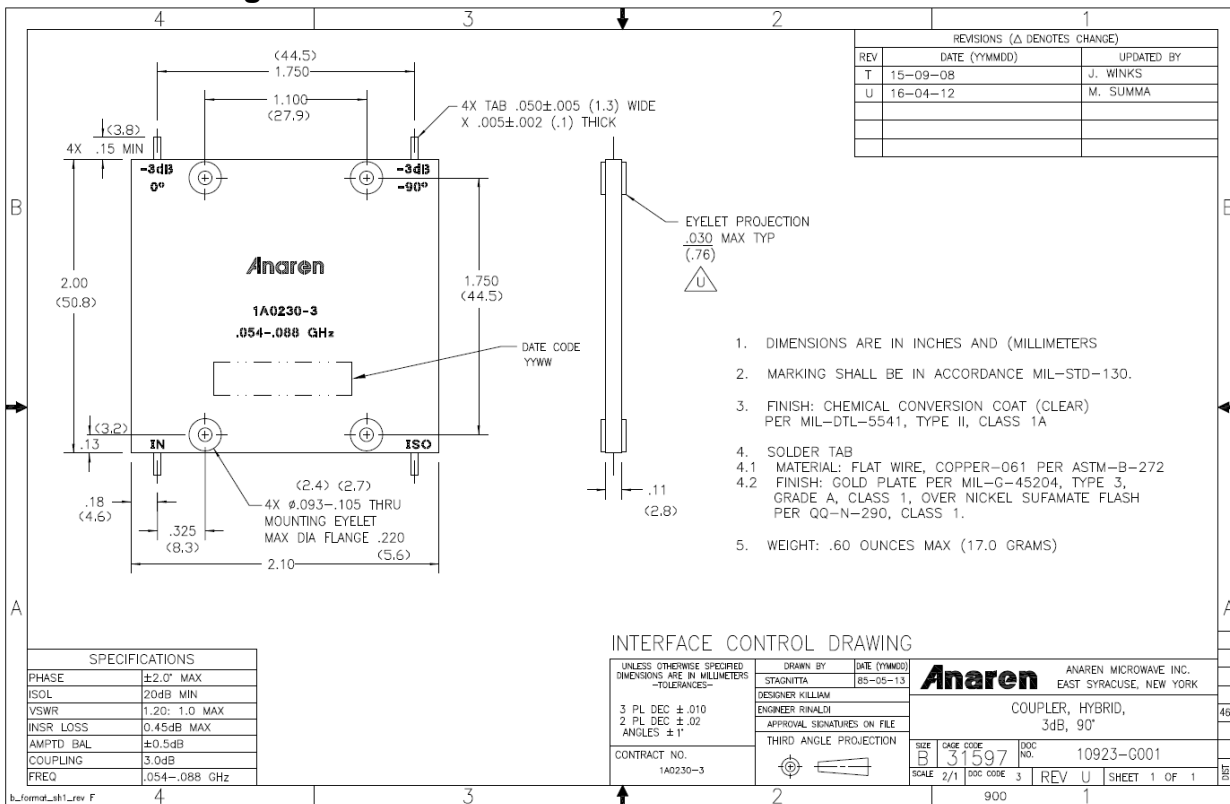
Features

- 0.054 – 0.088 GHz
- Welded Tab mount
- Reliable Performance
- Handles 700 Watts
- Meets MIL-E-5400 Class 3 Requirements



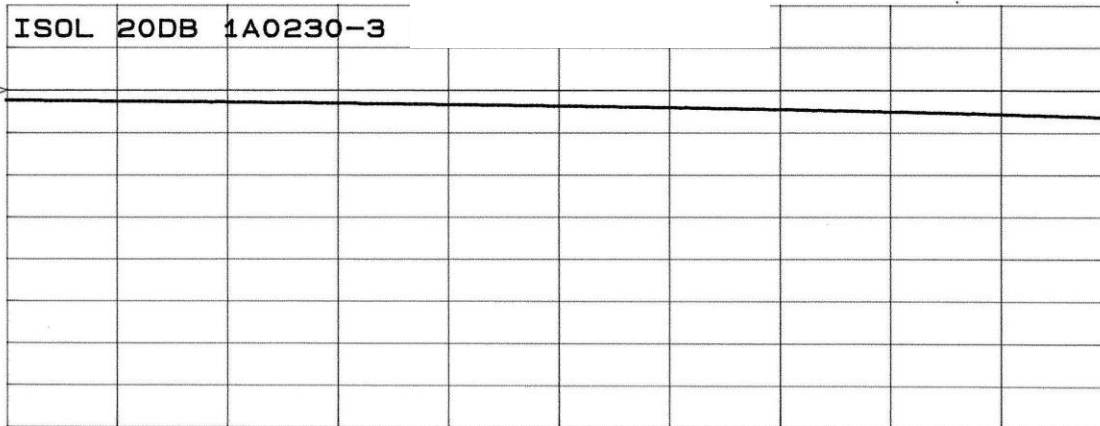
NOTES: Anaren Power rating applies when solder tab/coupler interface has been conformally coated.
Electrical and Mechanical Specifications subject to change without notice.

Outline Drawing



Typical Test Data Plots

CH1 MEM log MAG 10 dB/ REF -20 dB



CH2 S₂₁&M log MAG .5 dB/ REF -3.45 dB

