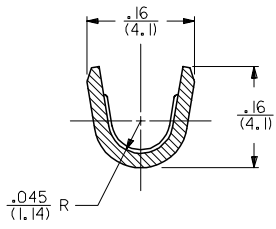
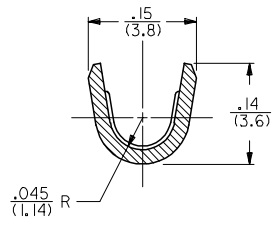


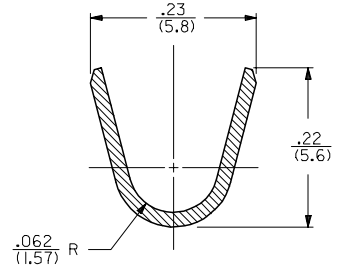
SECTION A-A  
SCALE 8:1



SECTION B-B  
SCALE 8:1  
14 AWG WIRE



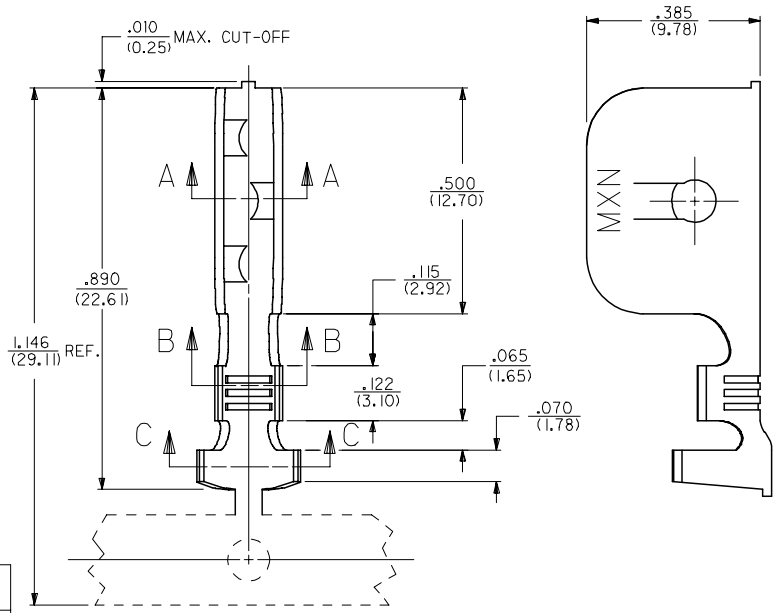
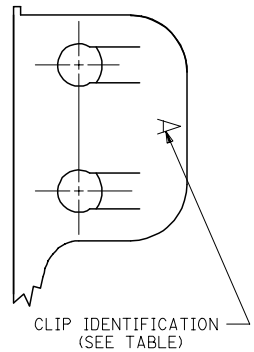
SECTION B-B  
SCALE 8:1  
18-16 AWG WIRE



SECTION C-C  
SCALE 8:1

NOTES:  
1. THIS GROUND CLIP CRIMPS TO #14- #18 AWG WIRE WITH .031(.79) THICK INSULATION, SEE CHART, AND IS INTENDED FOR USE ONLY AS A SECONDARY GROUND.

MATERIAL:  
STEEL, STAINLESS, TYPE 301,  
.020(.51) THICK.



| PART NO.    | ENG. NO.  | DIM. "D"    | DIM. "E"  | PANEL THICKNESS RANGE   | WIRE GAGE | DOUBLE WIRE COMBINATION |
|-------------|-----------|-------------|-----------|-------------------------|-----------|-------------------------|
| 040-06-2015 | 42172-BB1 | .025/(0.64) | .13/(3.3) | .035/(0.89)-.050/(1.27) | 14 AWG    | (2) #16 AWG             |
| 040-06-2014 | 42172-AA1 | .008/(0.20) | .11/(2.8) | .015/(0.38)-.035/(0.89) | 14 AWG    |                         |
| 050-29-1597 | 42172-H1  | .035/(0.89) | .13/(3.3) | .045/(1.14)-.060/(1.52) | 18-16 AWG |                         |
| 040-06-2017 | 42172-F1  | .015/(0.38) | .11/(2.8) | .020/(0.51)-.030/(0.76) | 18-16 AWG | (2) #18 AWG OR          |
| 040-06-2013 | 42172-C1  | .050/(1.27) | .13/(3.3) | .060/(1.52)-.075/(1.91) | 18-16 AWG | (1) #18 & (1) #16       |
| 040-06-2005 | 42172-B1  | .025/(0.64) | .13/(3.3) | .035/(0.89)-.050/(1.27) | 18-16 AWG |                         |
| 040-06-2003 | 42172-A1  | .008/(0.20) | .11/(2.8) | .015/(0.38)-.035/(0.89) | 18-16 AWG |                         |
| 040-06-2024 | 42172-G1  | .004/(0.10) | .11/(2.8) | .015/(0.38)-.035/(0.89) | 18-16 AWG |                         |

|                      |                 |
|----------------------|-----------------|
| REM GEOM OUTSIDE DWG | QUALITY SYMBOLS |
| FC NO: 2005/11/22    | ▽=0             |
| DRWN: C STEWART      | ▽=0             |
| CHKD:                |                 |
| APPR:                |                 |
| REV: R1              |                 |

| GENERAL TOLERANCES (UNLESS SPECIFIED)                |                |
|--|----------------|
|  | mm INCH        |
| 4 PLACES   | ± .010 ± .0004 |
| 3 PLACES   | ± .014 ± .0005 |
| 2 PLACES   | ± .025 ± .0010 |
| 1 PLACE  | ± .035 ± .0014 |
| ANGULAR ±1/2°  |                |
| DRAFT WHERE APPLICABLE MUST REMAIN WITHIN DIMENSIONS |                |

| DIMENSION STYLE |          |
|-----------------|----------|
| IN/MM           |          |
| DRAWN BY        | DATE     |
| MAB             | 07-24-92 |
| CHECKED BY      | DATE     |
| KBP             | 07-24-92 |
| APPROVED BY     | DATE     |
| RAS             | 07-24-92 |
| MATERIAL NO.    |          |
| DOCUMENT NO.    |          |
| SEE CHART       |          |

|   |                   |                        |
|---|-------------------|------------------------|
| SCALE 5:1   | DESIGN UNITS INCH | THIRD ANGLE PROJECTION |
| GROUND CLIP   |                   |                        |
| MOLEX INCORPORATED  |                   |                        |
| SD-42172-**   |                   | SHEET NO. 1 OF 1       |
| THIS DRAWING CONTAINS INFORMATION THAT IS PROPRIETARY TO MOLEX INCORPORATED AND SHOULD NOT BE USED WITHOUT WRITTEN PERMISSION |                   |                        |