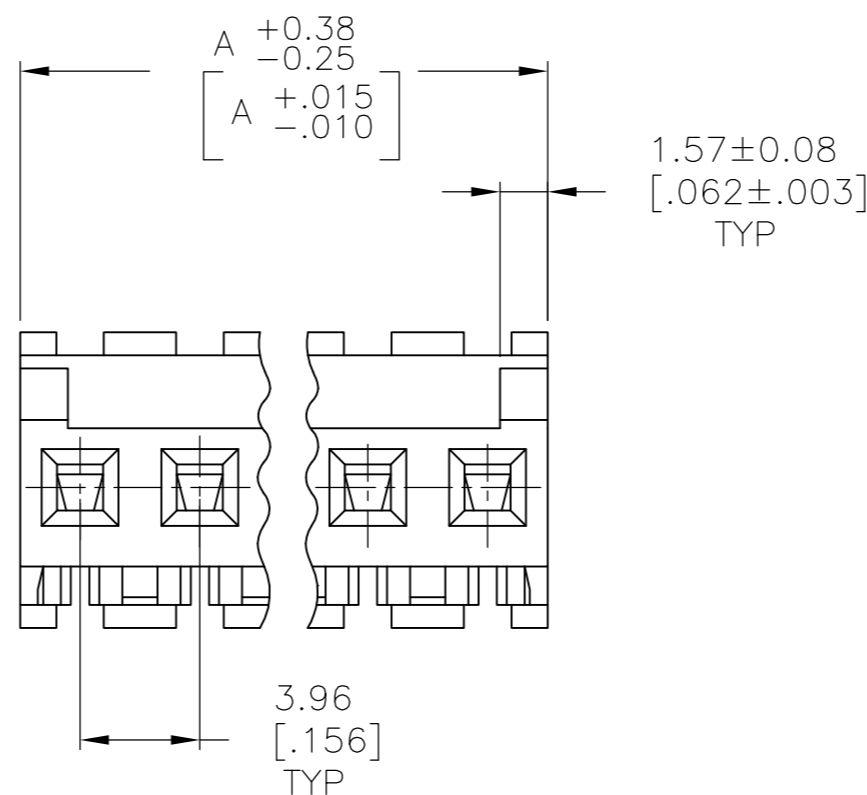
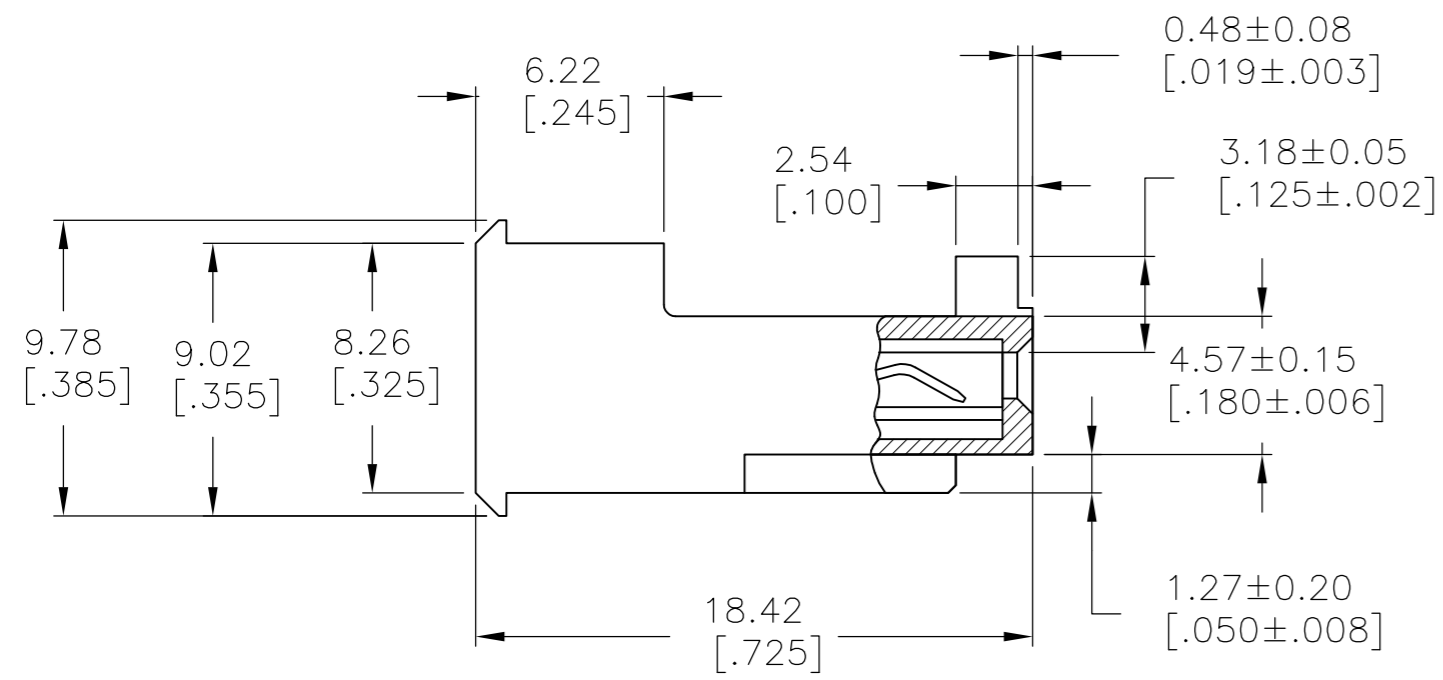
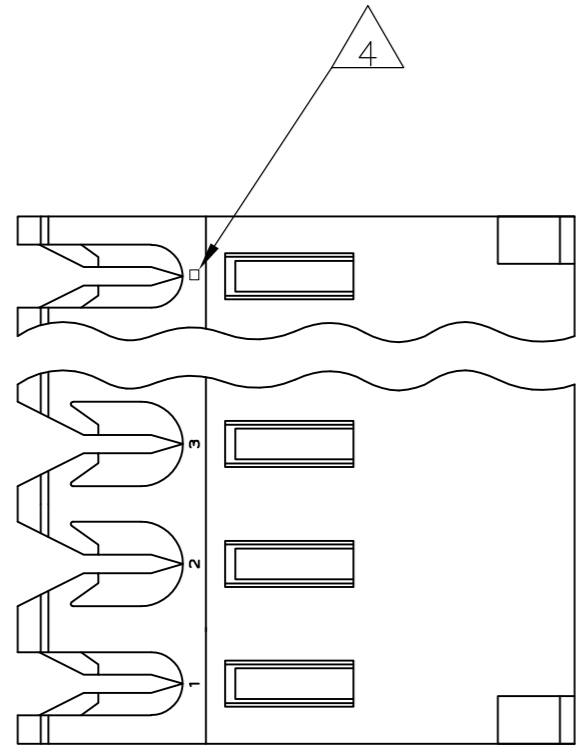


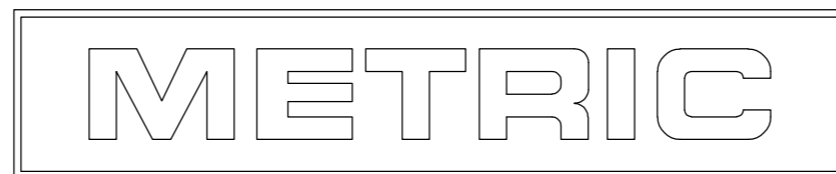
THIS DRAWING IS UNPUBLISHED. RELEASED FOR PUBLICATION
 © COPYRIGHT - By - ALL RIGHTS RESERVED.

LOC	DIST	REVISIONS					
		P	LTR	DESCRIPTION	DATE	DWN	APVD
CM	54		D	REVISED PER ECO-12-007611	03AUG12	KH	SM

- 1 MATERIAL: CONNECTOR - NYLON UL94V-2
 CONTACTS - 0.30[.012] THICK COPPER ALLOY
 (BRIGHT TIN-LEAD 0.00203[.000080] MIN. THICK FOR CONTACTS 644471-2 THRU 1-644471-4)
 (MATTE WHISKER MITIGATED TIN 0.00203[.000080] MIN THICKNESS OVER NICKEL UNDERPLATE FOR 3-644471-2 THRU 4-644471-4).
- 2 CONTACTS ACCEPT 22 AWG WIRE WITH 2.41[.095] MAX INSULATION DIAMETER.
- 3 CONTACTS MUST ACCEPT 1.14±0.03[.045±.001] SQUARE POST AND REMAIN LOCKED IN POSITION.
- 4 IDENTIFICATION NUMBER FOR LAST CIRCUIT MAY NOT APPEAR ON ALL ASSEMBLIES.
- 5 DIMENSIONS IN BRACKETS ARE IN INCHES.
- 6 HOUSING FEATURES ARE: FEED-THRU WITHOUT LOCKING RAMP AND WITH POLARIZING TAB.
- 7 OBSOLETE PARTS: OBSOLETE CIS STREAMLINING PER D.RENAUD/D.SINISI
- 8 RED COLOR STRIPE ON HOUSING (NOT SHOWN) MAY RUN DOWN BETWEEN RIBS



55.47 [2.184]	14	4-644471-4
51.51 [2.028]	13	4-644471-3
47.55 [1.872]	12	4-644471-2
43.59 [1.716]	11	4-644471-1
39.62 [1.560]	10	4-644471-0
35.66 [1.404]	9	3-644471-9
31.70 [1.248]	8	3-644471-8
27.74 [1.092]	7	3-644471-7
23.77 [.936]	6	3-644471-6
19.81 [.780]	5	3-644471-5
15.85 [.624]	4	3-644471-4
11.89 [.468]	3	3-644471-3
7.92 [.312]	2	3-644471-2
7 SUPERSEDED	14	1-644471-4
7 SUPERSEDED	13	1-644471-3
7 SUPERSEDED	12	1-644471-2
7 SUPERSEDED	11	1-644471-1
	10	1-644471-0
7 SUPERSEDED	9	644471-9
	8	644471-8
7 SUPERSEDED	7	644471-7
7 SUPERSEDED	6	644471-6
	5	644471-5
7 SUPERSEDED	4	644471-4
7 SUPERSEDED	3	644471-3
7 SUPERSEDED	2	644471-2
	DIM A	NO OF CIRCUITS
		PART NO



THIS DRAWING IS A CONTROLLED DOCUMENT.		DWN B. LEWIS 12 FEB 91	TE Connectivity	
DIMENSIONS: mm [INCHES]		CHK R. SWING 12 FEB 91	MTA 156 CONNECTOR ASSEMBLY, 22 AWG, STANDARD	
TOLERANCES UNLESS OTHERWISE SPECIFIED:		APVD D.R. CLARK 20 FEB 91	RESTRICTED TO	
0 PLC ± -	1 PLC ± -	PRODUCT SPEC 108-1051	SIZE A2	CAGE CODE 00779
2 PLC ± -	3 PLC ± -	APPLICATION SPEC 114-1020	DRAWING NO C-644471	SCALE 4:1
4 PLC ± -	ANGLES ± -	MATERIAL 1	WEIGHT -	SHEET 1 OF 1
FINISH 1		CUSTOMER DRAWING		REV D