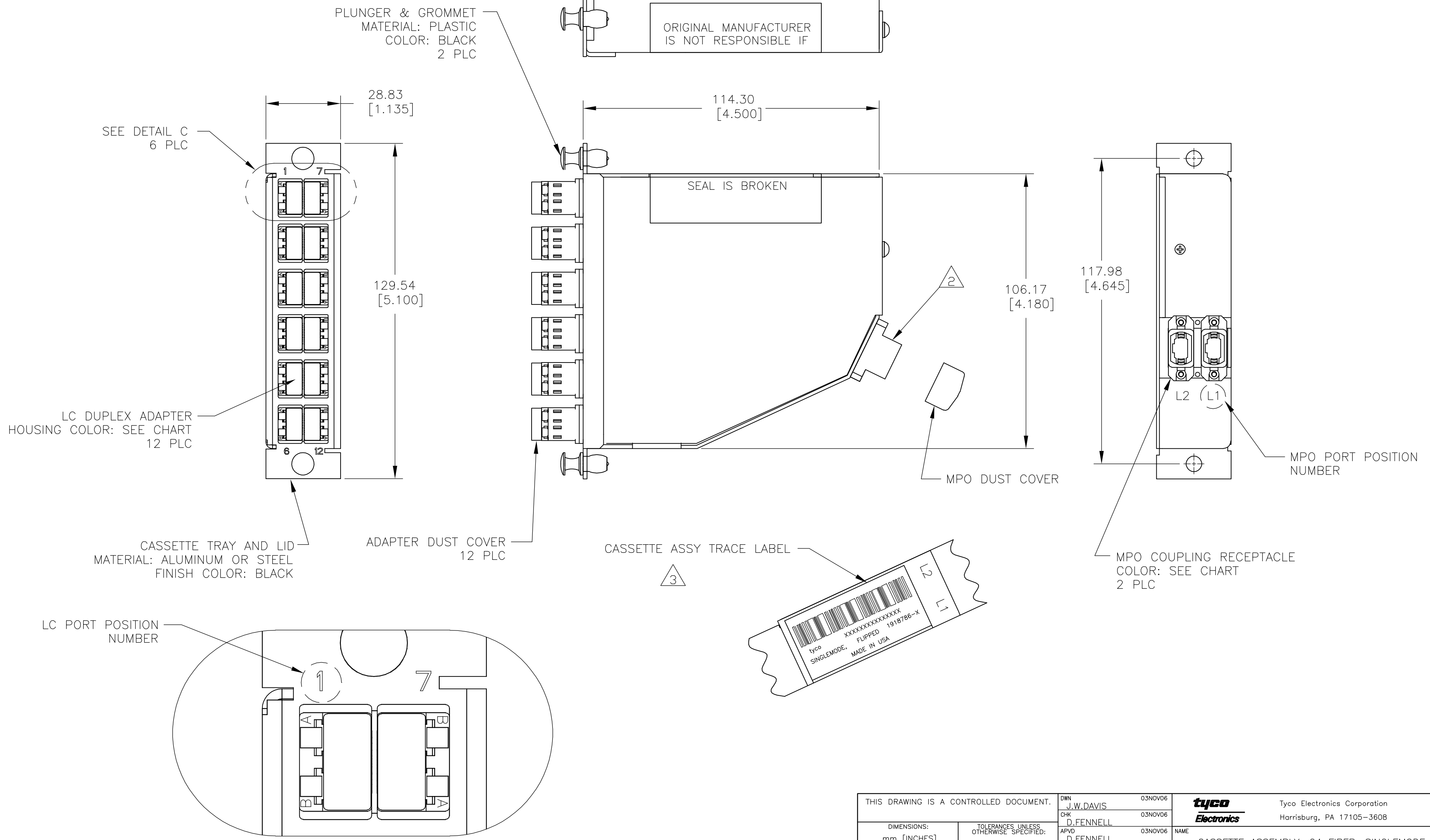


LOC	DIST	REVISIONS					
CE	16	P	LTR	DESCRIPTION	DATE	DWN	APVD
		A		RELEASED	07FEB07	JWD	DLF

D  
C  
B  
A

D  
C  
B  
A



THIS DRAWING IS A CONTROLLED DOCUMENT.		DWN	J.W.DAVIS	03NOV06	<b>tyco</b> Electronics	Tyco Electronics Corporation Harrisburg, PA 17105-3608									
DIMENSIONS: mm [INCHES]		CHK	D.FENNELL	03NOV06		NAME CASSETTE ASSEMBLY, 24 FIBER, SINGLEMODE MPO - LC PAIRS FLIPPED									
TOLERANCES UNLESS OTHERWISE SPECIFIED:		APVD	D.FENNELL	03NOV06	SIZE	A2	CAGE CODE	00779	DRAWING NO	C-1918786	RESTRICTED TO	-			
0 PLC ± -		PRODUCT SPEC		APPLICATION SPEC		WEIGHT		SCALE		NTS	SHEET	1 of 2	REV	A	
1 PLC ± -		APPLICATION SPEC		CUSTOMER DRAWING		SCALE		NTS		SHEET		1 of 2		REV	A
2 PLC ± -		WEIGHT		CUSTOMER DRAWING		SCALE		NTS		SHEET		1 of 2		REV	A
3 PLC ± -		CUSTOMER DRAWING		CUSTOMER DRAWING		SCALE		NTS		SHEET		1 of 2		REV	A
4 PLC ± -		CUSTOMER DRAWING		CUSTOMER DRAWING		SCALE		NTS		SHEET		1 of 2		REV	A
ANGLES ± -		CUSTOMER DRAWING		CUSTOMER DRAWING		SCALE		NTS		SHEET		1 of 2		REV	A
FINISH		CUSTOMER DRAWING		CUSTOMER DRAWING		SCALE		NTS		SHEET		1 of 2		REV	A

1918786

THIS DRAWING IS UNPUBLISHED. RELEASED FOR PUBLICATION  
 © COPYRIGHT BY TYCO ELECTRONICS CORPORATION. ALL RIGHTS RESERVED.

LOC	DIST	REVISIONS			
P	LTR	DESCRIPTION	DATE	DWN	APVD
CE	16	SEE SHEET 1	-	-	-

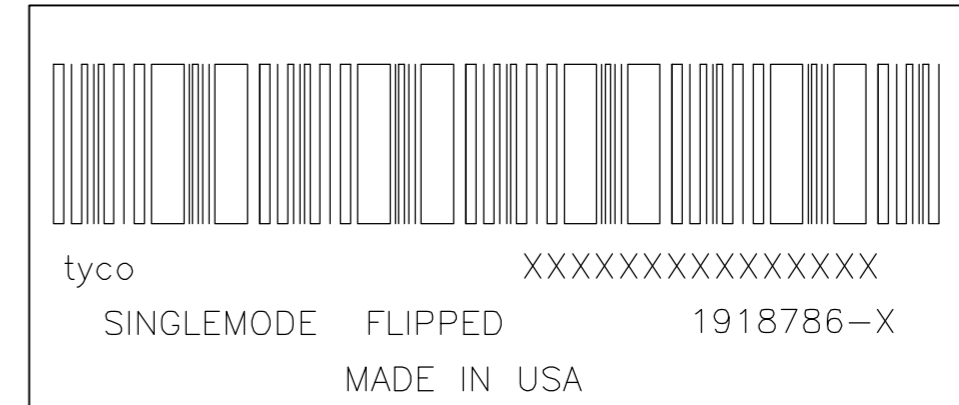
1. MAXIMUM CASSETTE ASSEMBLY LOSS: 1.25dB.

2. WHITE MARKING ON MPO TO BE FACING TOWARD TOP OF CONNECTOR MODULE. WHITE MARK INDICATES FIBER 1 SIDE

3. SEE TRACE LABEL DETAIL

4. A COPY OF CASSETTE ASSEMBLY LOSS TEST DATA WILL BE PLACED INSIDE OR WITH THE UNIT PACKAGE. CASSETTES WILL BE TESTED AT 1310nm & 1550nm WAVELENGTHS.

5. PRODUCT AND PROCESSING MUST MEET REQUIREMENTS OF TYCO ELECTRONICS STANDARD 230-702



FIBER PATH – PAIRS FLIPPED

MPO L1 PORT POSITION NO	MPO L2 PORT POSITION NO	LC PORT POSITION NO
1	-	1A
2	-	1B
3	-	2A
4	-	2B
5	-	3A
6	-	3B
7	-	4A
8	-	4B
9	-	5A
10	-	5B
11	-	6A
12	-	6B
-	1	7A
-	2	7B
-	3	8A
-	4	8B
-	5	9A
-	6	9B
-	7	10A
-	8	10B
-	9	11A
-	10	11B
-	11	12A
-	12	12B

BLACK STANDARD	AQUA SECURE	1-1918786-1
BLACK STANDARD	SLATE SECURE	1-1918786-0
BLACK STANDARD	ROSE SECURE	1918786-9
BLACK STANDARD	VIOLET SECURE	1918786-8
BLACK STANDARD	BROWN SECURE	1918786-7
BLACK STANDARD	ORANGE SECURE	1918786-6
BLACK STANDARD	YELLOW SECURE	1918786-5
BLACK STANDARD	BLUE SECURE	1918786-4
BLACK STANDARD	GREEN SECURE	1918786-3
BLACK STANDARD	RED SECURE	1918786-2
BLACK STANDARD	BLUE STANDARD	1918786-1
MPO COUPLING BUSHING COLOR & TYPE	LC ADAPTER COLOR & TYPE	PART NUMBER

THIS DRAWING IS A CONTROLLED DOCUMENT.		DWN J.W.DAVIS 03NOV06	Tyco Electronics Corporation Harrisburg, PA 17105-3608	
DIMENSIONS: mm [INCHES]		CHK D.FENNELL 03NOV06	NAME CASSETTE ASSEMBLY, 24 FIBER, SINGLEMODE MPO - LC PAIRS FLIPPED	
TOLERANCES UNLESS OTHERWISE SPECIFIED:		APVD D.FENNELL 03NOV06	CAGE CODE 00779	
0 PLC ± -		PRODUCT SPEC	DRAWING NO C=1918786	
1 PLC ± -		APPLICATION SPEC	RESTRICTED TO	
2 PLC ± -		WEIGHT -	SCALE NTS	
3 PLC ± -		CUSTOMER DRAWING	SHEET 2 of 2	
4 PLC ± -		FINISH -	REV A	
ANGLES ± -				