

IEC Appliance Inlet C14 or C18 with Filter, high attenuation, ECO design, Front- or Rear Side Mounting



Screw-on mounting



Snap-in mounting  
 Quick connect terminals 6.3 x 0.8 mm  
 Protection class II



Screw-on mounting  
 with wires (stranded)



See below:  
[Approvals and Compliances](#)

### Description

- Panel mount :  
 Screw-on version from front or rear side, snap-in version from front side, PCB Version from rear side
- 2 Functions :  
 Appliance Inlet protection class I or II , Line filter in standard and medical version
- Solder, quick connect or wire (stranded)
- PCB Mounting
- Earth Terminal

### Unique Selling Proposition

- Very high asymmetrical attenuation
- Various variants
- Metal flange for optimal shielding
- Compact design

### Characteristics

- Compact filter with high asymmetrical attenuation
- Optimal shielding due to completely closed filter case, unpotted
- Suitable for assembly in metal plated plastic housings
- Suitable for use in equipment according to IEC/UL 60950
- Suitable for use in medical equipment according to IEC/UL 60601-1

### Other versions on request

- Snap-in for panel thickness >2mm to 3mm
- flexible wire with various lengths
- Class X1- and Y1-capacitors for enhanced withstand voltage
- Variant with notch for V-Lock mating Cordsets
- Variant with plastic flange for front mounting

### Weblinks

[pdf datasheet](#), [html-datasheet](#), [General Product Information](#), [Distributor-Stock-Check](#), [Accessories](#), [Detailed request for product](#), [Microsite](#)

Newly available variants corresponding to V-Lock mating cordset. The connector is equipped with a notch intended for use with the latching cordset. The cord latching system prevents against accidental removal of the cordset.

### Technical Data

|                                 |   |                         |  |
|---------------------------------|---|-------------------------|--|
| Ratings IEC                     | 1 - 10A @ Ta 40 °C / 250VAC; 50Hz   | appliance inlet/-outlet | C14 / C18 acc. to IEC 60320-1, UL 498, CSA C22.2 no. 42 (for cold conditions) pin-temperature 70 °C, 10A, Protection Class I or II |
| Ratings UL/CSA                  | 1 - 15A @ Ta 40 °C / 250VAC; 60Hz   | Line Filter             | Standard and Medical Version, IEC 60939, UL 1283, CSA C22.2 no. 8<br><a href="#">Technical Details</a>                             |
| Leakage Current                 | standard < 0.5mA (250 V / 60Hz)<br>medical < 5 µA (250 V / 60 Hz)   | MTBF                    | > 3'000'000h acc. to MIL-HB-217 F  |
| Dielectric Strength             | > 1.7 kVDC between L-N<br>> 2.7 kVDC between L/N-PE<br>Test voltage (2 sec)                                   |                         |  |
| Allowable Operation Temperature | -25 °C to 85 °C   |                         |  |
| Climatic Category               | 25/085/21 acc. to IEC 60068-1   |                         |  |
| IP-Protection                   | from front side IP 40 acc. to IEC 60529   |                         |  |
| Protection Class                | Suitable for appliances with protection class I or II acc. to IEC 61140                                       |                         |  |
| Terminal                        | Quick connect terminals 6.3 x 0.8 mm<br>Solder terminals<br>Flexible wire AWG18 (15A AWG16), 150 mm           |                         |  |
| Panel Thickness S               | Screw: max 8 mm<br>Mounting screw torque max 0.5Nm<br>Snap-in: 0.8 mm to 2 mm<br>(all steps with one variant) |                         |  |
| Material: Housing               | Thermoplast / steel tin-plated, black / metallic, UL 94V-0  |                         |  |



### Approvals and Compliances

Detailed information on product approvals, code requirements, usage instructions and detailed test conditions can be looked up in [Details about Approvals](#)

## Approvals








The approval mark is used by the testing authorities to certify compliance with the safety requirements placed on electronic products.

Approval Reference Type: 5123

| Approval Logo  | Certificates  | Certification Body | Description                  |
|--|---------------|--------------------|------------------------------|
|  | VDE Approvals | VDE                | Certificate Number: 40016382 |
|  | UL Approvals  | UL                 | UL File Number: E72928       |



## Product standards

Product standards that are referenced

| Organization   | Design                | Standard         | Description   |
|--|-----------------------|------------------|---|
|  | Designed according to | IEC 60320-1      | Appliance couplers for household and similar general purposes         |
|  | Designed according to | IEC 60939        | Passive filters for suppressing electromagnetic interference          |
|  | Designed according to | IEC 61058-1      | Switches for appliances. Part 1. General requirements                 |
|  | Designed according to | UL 498           | Standard for Attachment Plugs and Receptacles                         |
|  | Designed according to | UL 1283          | Electromagnetic interference filters                                  |
|  | Designed according to | CSA C22.2 no. 42 | General Use Receptacles, Attachment Plugs, and Similar Wiring Devices |
|  | Designed according to | CSA C22.2 no. 8  | Electromagnetic interference (EMI) filters                            |







## Application standards

Application standards where the product can be used

| Organization   | Design                         | Standard     | Description  |
|--|--------------------------------|--------------|--|
|  | Designed for applications acc. | IEC/UL 60950 | IEC 60950-1 includes the basic requirements for the safety of information technology equipment.        |
|  | Designed for applications acc. | IEC 60601-1  | Medical electrical equipment - Part 1: General requirements for basic safety and essential performance |

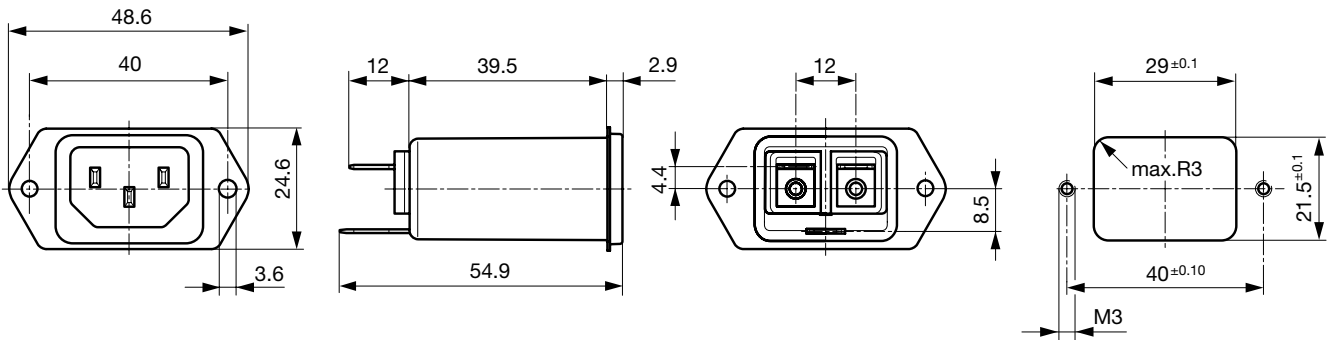
## Compliances

The product complies with following Guide Lines

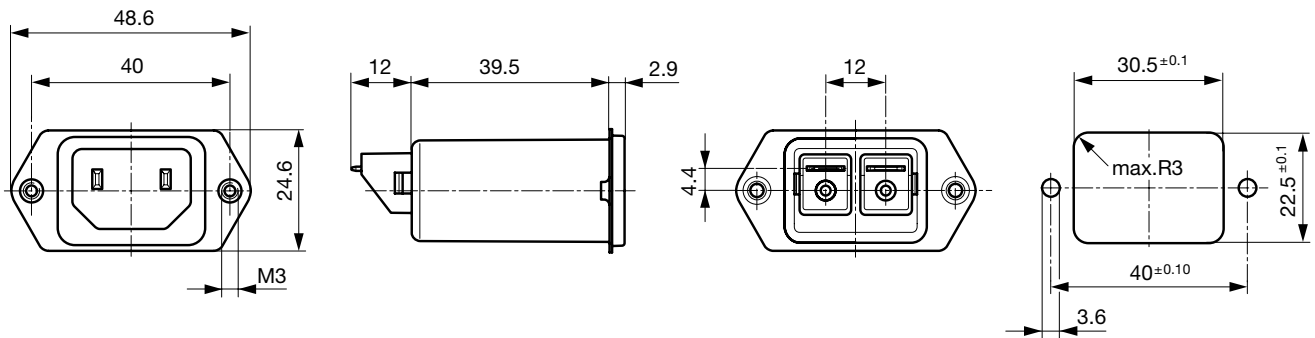
| Identification   | Details                      | Initiator   | Description  |
|--|------------------------------|-------------|--|
|  | CE declaration of conformity | SCHURTER AG | The CE marking declares that the product complies with the applicable requirements laid down in the harmonisation of Community legislation on its affixing in accordance with EU Regulation 765/2008.                        |
|  | RoHS                         | SCHURTER AG | EU Directive RoHS 2011/65/EU   |
|  | China RoHS                   | SCHURTER AG | The law SJ / T 11363-2006 (China RoHS) has been in force since 1 March 2007. It is similar to the EU directive RoHS.   |
|  | REACH                        | SCHURTER AG | On 1 June 2007, Regulation (EC) No 1907/2006 on the Registration, Evaluation, Authorization and Restriction of Chemicals 1 (abbreviated as "REACH") entered into force.  |
|  | MicrositeV-Lock              | SCHURTER AG | V-Lock system are based on a matching plug-dose combination. The connector is equipped with a notch intended for use with the latching cordset. The cord latching system prevents against accidental removal of the cordset. |
|  | Medical Equipment            | SCHURTER AG | Suitable for use in medical equipment according to IEC/UL 60601-1  |

**Dimensions [mm]**

Front or rear side mounting for screws with nuts or blind rivets (panel cutout for frontside mounting)

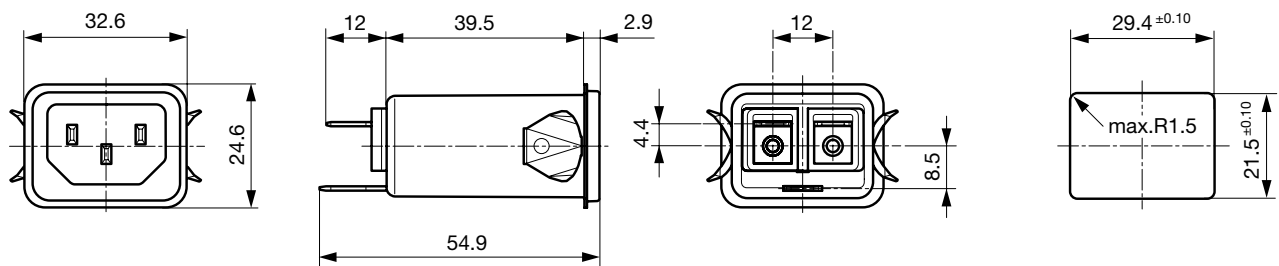


Rear side mounting with pre-formed, threaded holes for M3 screws (panel cutout for rear side mounting)



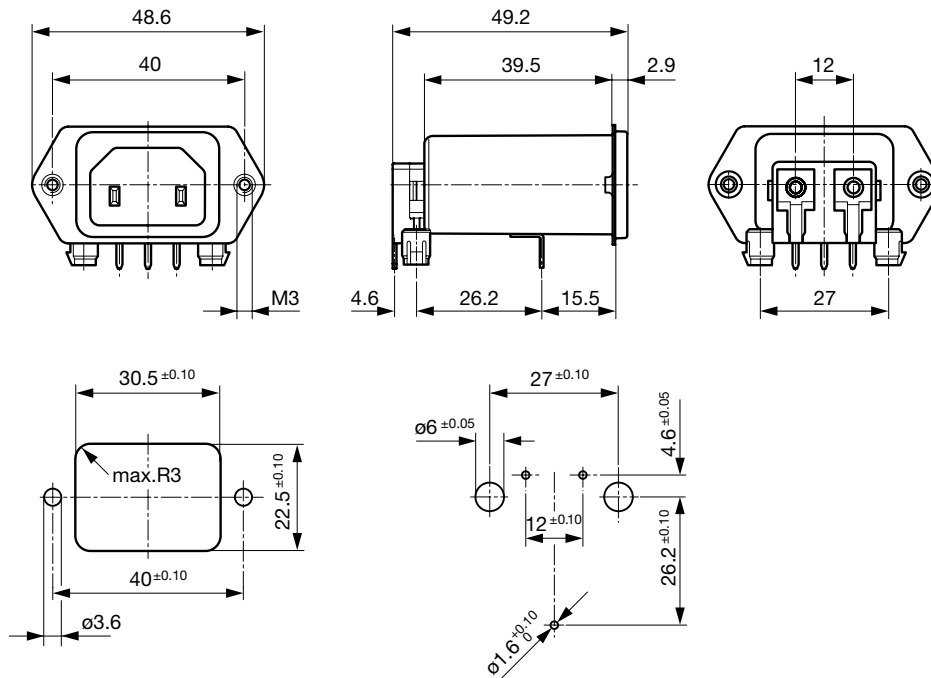
Dimensions for class II version also apply to class I

Snap-in mounting from front side

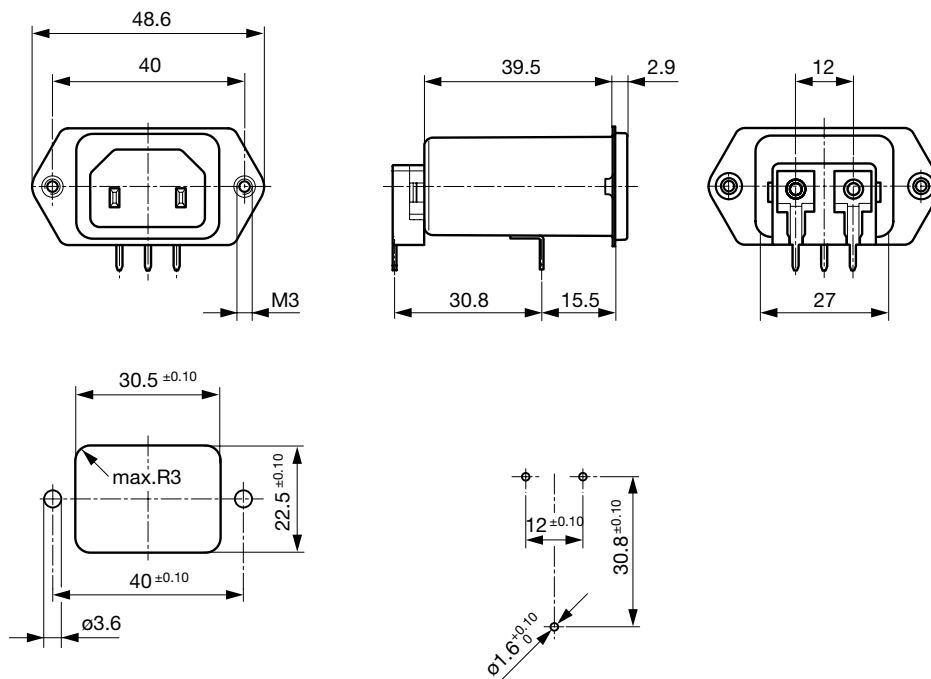


Dimensions for class I version also apply class II

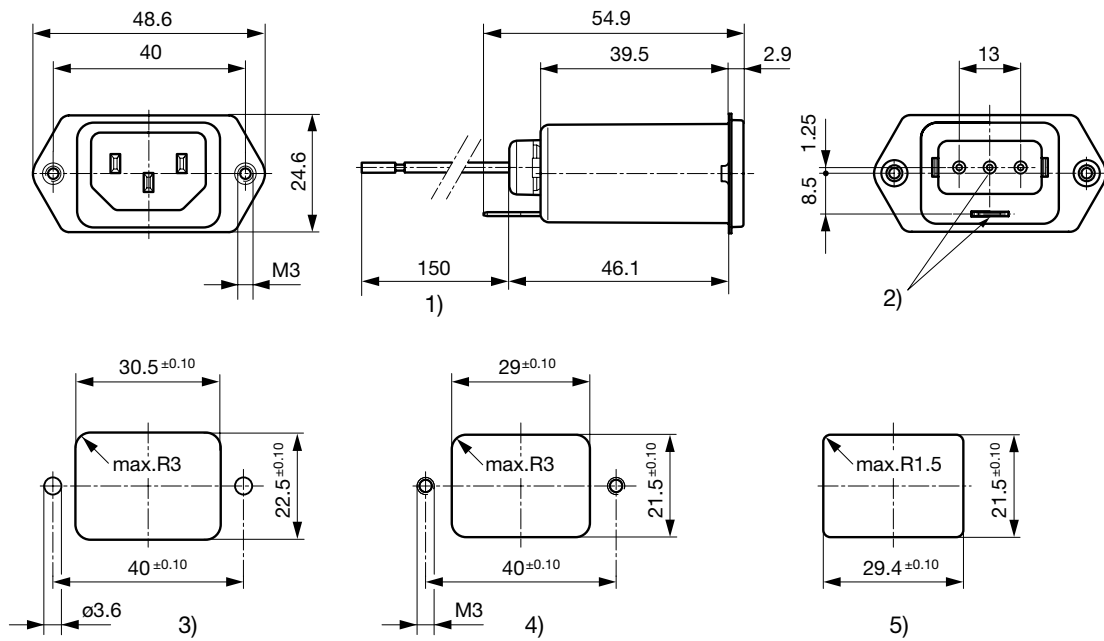
PCB snap-in rear side mounting, protection class II



PCB rear side mounting, protection class II



Screw and snap-in mounting with flexible wire



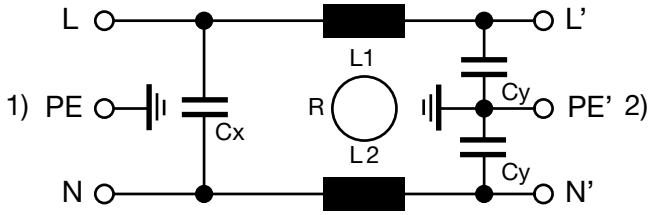
- 1) Flexible wire, standard length 150 mm or special length on request
- 2) Nonexistent for protection class II
- 3) Panel cut-out screw-on version, back-side mounting
- 4) Panel cut-out screw-on version, front- or back-side mounting
- 5) Panel cut-out snap-in version, front-side mounting

Technical Data of Filter-Components

| Rated Current [A] | Filter-Type           | Inductances L [mH] | Capacitance CX [nF] | Capacitance CY [nF] | R [MΩ] |
|-------------------|-----------------------|--------------------|---------------------|---------------------|--------|
| 1                 | Standard Version      | 2 x 20             | 100                 | 2.2                 | -      |
| 2                 | Standard Version      | 2 x 9              | 100                 | 2.2                 | -      |
| 4                 | Standard Version      | 2 x 3.4            | 100                 | 2.2                 | -      |
| 6                 | Standard Version      | 2 x 1.6            | 100                 | 2.2                 | -      |
| 10                | Standard Version      | 2 x 0.65           | 100                 | 2.2                 | -      |
| 15                | Standard Version      | 2 x 0.2            | 100                 | 2.2                 | -      |
| 1                 | Medical Version (M5)  | 2 x 20             | 100                 | -                   | 1      |
| 2                 | Medical Version (M5)  | 2 x 9              | 100                 | -                   | 1      |
| 4                 | Medical Version (M5)  | 2 x 3.4            | 100                 | -                   | 1      |
| 6                 | Medical Version (M5)  | 2 x 1.6            | 100                 | -                   | 1      |
| 10                | Medical Version (M5)  | 2 x 0.65           | 100                 | -                   | 1      |
| 15                | Medical Version (M5)  | 2 x 0.2            | 100                 | -                   | 1      |
| 6                 | Medical Version (M80) | 2 x 1.6            | 100                 | 0.47                | 1      |

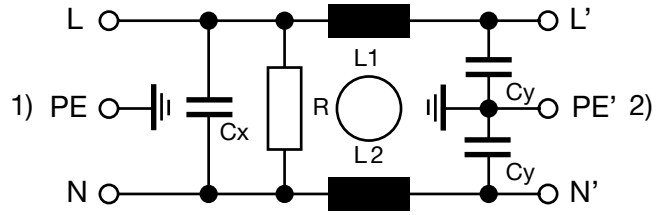
Diagrams

Standard version



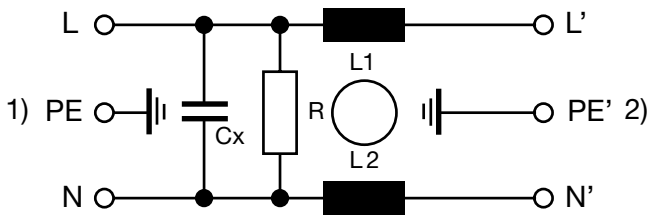
1) Line  
 2) Load

Bleed resistor version / medical version M80



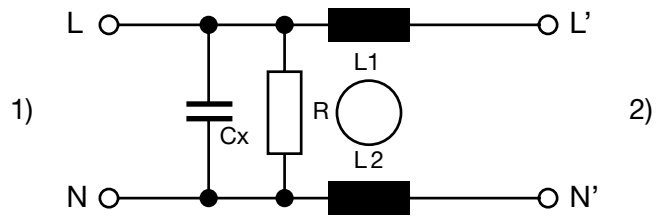
1) Line  
 2) Load

Medical version M5



1) Line  
 2) Load

Medical version M5, prot. class II



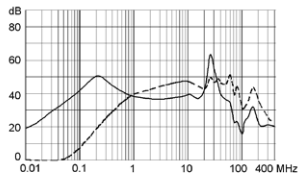
1) Line  
 2) Load

Attenuation Loss

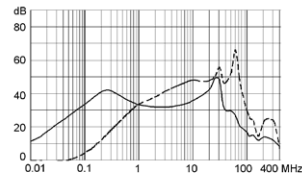
- - - 50Ω differential mode \_\_\_\_\_ 50Ω common mode

Standard version

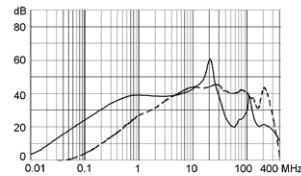
1 A



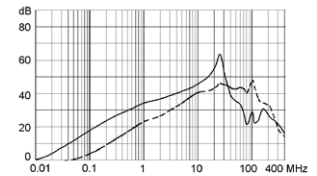
2 A



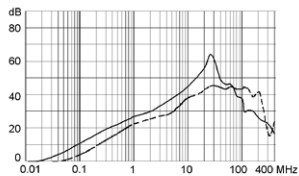
4 A



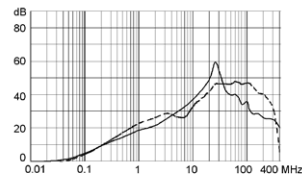
6 A



10 A

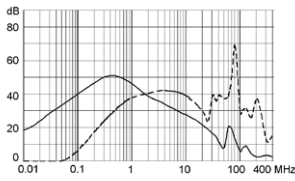


15 A

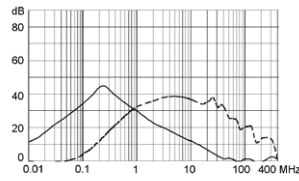


Medical version (M5)

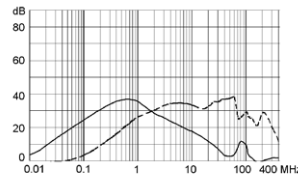
1 A



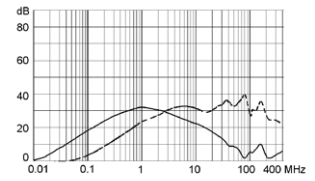
2 A



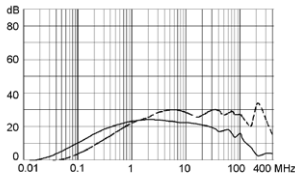
4 A



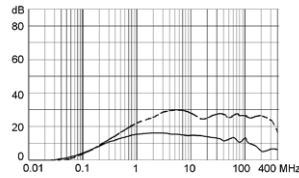
6 A



10 A

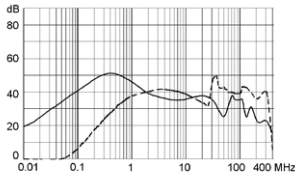


15 A

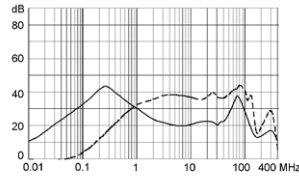


Medical version (M80)

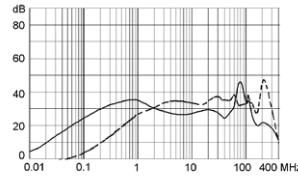
1 A



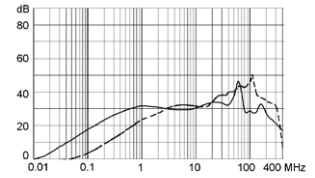
2 A



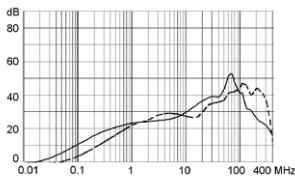
4 A



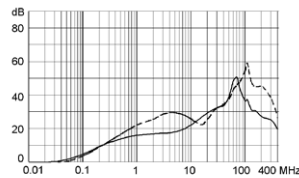
6 A



10 A



15 A



All Variants

| Rated Current [A] | Filter-Type      | Mounting  | Mounting side    | Terminal           | Protection Class | V-Lock | Order Number   |
|-------------------|------------------|-----------|------------------|--------------------|------------------|--------|----------------|
| 1                 | Standard Version | Snap-in   | Front Side       | Quick connect      | I                |        | 5123.2000.0    |
| 1                 | Standard Version | Snap-in   | Front Side       | Quick connect      | I                | ●      | 5123.2000.0.21 |
| 2                 | Standard Version | Snap-in   | Front Side       | Quick connect      | I                |        | 5123.2001.0    |
| 4                 | Standard Version | Snap-in   | Front Side       | Quick connect      | I                |        | 5123.2003.0    |
| 6                 | Standard Version | Snap-in   | Front Side       | Quick connect      | I                |        | 5123.2004.0    |
| 10                | Standard Version | Snap-in   | Front Side       | Quick connect      | I                |        | 5123.2006.0    |
| 15                | Standard Version | Snap-in   | Front Side       | Quick connect      | I                |        | 5123.2007.0    |
| 6                 | Standard Version | Screw/PCB | Rear Side        | PCB pin and earth  | I                |        | 5123.4074.0    |
| 1                 | Standard Version | Screw     | Rear Side        | Quick connect      | I                | ●      | 5123.1000.0.21 |
| 2                 | Standard Version | Screw     | Rear Side        | Quick connect      | I                | ●      | 5123.1001.0.21 |
| 4                 | Standard Version | Screw     | Rear Side        | Quick connect      | I                | ●      | 5123.1003.0.21 |
| 6                 | Standard Version | Screw     | Rear Side        | Quick connect      | I                | ●      | 5123.1004.0.21 |
| 10                | Standard Version | Screw     | Rear Side        | Quick connect      | I                | ●      | 5123.1006.0.21 |
| 10                | Standard Version | Screw     | Rear Side        | Flexible wire con- | I                |        | 5123.1046.0    |
| 15                | Standard Version | Screw     | Rear Side        | Quick connect      | I                | ●      | 5123.1007.0.21 |
| 1                 | Standard Version | Screw     | Front-/Rear-Side | Quick connect      | I                |        | 5123.0000.0    |

| Rated Current [A] | Filter-Type           | Mounting | Mounting side    | Terminal      | Protection Class | V-Lock | Order Number   |
|-------------------|-----------------------|----------|------------------|---------------|------------------|--------|----------------|
| 2                 | Standard Version      | Screw    | Front-/Rear-Side | Quick connect | I                |        | 5123.0001.0    |
| 4                 | Standard Version      | Screw    | Front-/Rear-Side | Quick connect | I                |        | 5123.0003.0    |
| 4                 | Standard Version      | Screw    | Front-/Rear-Side | Flexible wire | I                |        | 5123.0233.0    |
| 6                 | Standard Version      | Screw    | Front-/Rear-Side | Quick connect | I                |        | 5123.0004.0    |
| 10                | Standard Version      | Screw    | Front-/Rear-Side | Quick connect | I                |        | 5123.0006.0    |
| 15                | Standard Version      | Screw    | Front-/Rear-Side | Quick connect | I                |        | 5123.0007.0    |
| 1                 | Medical Version (M5)  | Snap-in  | Front Side       | Quick connect | I                |        | 5123.2300.0    |
| 2                 | Medical Version (M5)  | Snap-in  | Front Side       | Quick connect | I                |        | 5123.2301.0    |
| 4                 | Medical Version (M5)  | Snap-in  | Front Side       | Quick connect | I                |        | 5123.2303.0    |
| 6                 | Medical Version (M5)  | Snap-in  | Front Side       | Quick connect | I                |        | 5123.2304.0    |
| 10                | Medical Version (M5)  | Snap-in  | Front Side       | Quick connect | I                |        | 5123.2306.0    |
| 15                | Medical Version (M5)  | Snap-in  | Front Side       | Quick connect | I                |        | 5123.2307.0    |
| 1                 | Medical Version (M5)  | Screw    | Rear Side        | Quick connect | I                | ●      | 5123.1300.0.21 |
| 2                 | Medical Version (M5)  | Screw    | Rear Side        | Quick connect | I                | ●      | 5123.1301.0.21 |
| 4                 | Medical Version (M5)  | Screw    | Rear Side        | Quick connect | I                | ●      | 5123.1303.0.21 |
| 6                 | Medical Version (M5)  | Screw    | Rear Side        | Quick connect | I                | ●      | 5123.1304.0.21 |
| 10                | Medical Version (M5)  | Screw    | Rear Side        | Quick connect | I                | ●      | 5123.1306.0.21 |
| 15                | Medical Version (M5)  | Screw    | Rear Side        | Quick connect | I                | ●      | 5123.1307.0.21 |
| 1                 | Medical Version (M5)  | Screw    | Front-/Rear-Side | Quick connect | I                |        | 5123.0300.0    |
| 2                 | Medical Version (M5)  | Screw    | Front-/Rear-Side | Quick connect | I                |        | 5123.0301.0    |
| 4                 | Medical Version (M5)  | Screw    | Front-/Rear-Side | Quick connect | I                |        | 5123.0303.0    |
| 6                 | Medical Version (M5)  | Screw    | Front-/Rear-Side | Quick connect | I                |        | 5123.0304.0    |
| 10                | Medical Version (M5)  | Screw    | Front-/Rear-Side | Quick connect | I                |        | 5123.0306.0    |
| 15                | Medical Version (M5)  | Screw    | Front-/Rear-Side | Quick connect | I                |        | 5123.0307.0    |
| 6                 | Medical Version (M80) | Screw    | Front-/Rear-Side | Quick connect | I                |        | 5123.0504.0    |

Availability for all products can be searched real-time: <https://www.schurter.com/en/Stock-Check/Stock-Check-SCHURTER>

- 15 A version only according UL/CSA

- Type for screw-on mounting from rear side has pre-threaded holes for M3 screws

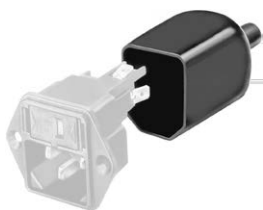
**Packaging unit** 10 Pcs

## Accessories

### Description



**Wire Harness**  
Wire harness for SCHURTER products



**Assorted Covers**  
Rear Cover





Cord retaining kits  
 Cord retaining strain relief

## Mating Outlets/Connectors

### Category / Description



#### Appliance Outlet Overview complete

|   |      |
|---|------|
| IEC Appliance Outlet F, Screw-on Mounting, Front Side, Solder Terminal                            | 4787 |
| IEC Appliance Outlet F, Snap-in Mounting, Front Side, Solder or Quick-connect Terminal            | 4788 |
| IEC Appliance Outlet F or H, Screw-on Mounting, Front Side, Solder, PCB or Quick-connect Terminal | 5091 |

[Appliance Outlet further types to 5123](#)



#### Connector Overview complete

|   |         |
|---|---------|
| 4782 Mounting: Power Cord, 3 x 1 mm <sup>2</sup> / 3 x 18 AWG, Cable, Connector: IEC C13    | 4782    |
| 4785 Mounting: Power Cord, 3 x 1 mm <sup>2</sup> / 3 x 18 AWG, Cable, Connector: IEC C13    | 4785    |
| 4300-06 Mounting: Power Cord, 3 x 1 mm <sup>2</sup> / 3 x 18 AWG, Cable, Connector: IEC C13 | 4300-06 |

[Connector further types to 5123](#)

## Mating Outlets/Connectors shuttered



#### Power Cord Overview complete

|   |         |
|---|---------|
| VAC13KS, Overview, diverse Connector IEC C13, cord end: | VAC13KS |
| Power cord with IEC connector C17, V-Lock, straight     | VAC17KS |

[Power Cord further types to 5123](#)