

## Front adapters - FLKM 50-PA-GE/TKFC/RXI/IN - 2321486

Please be informed that the data shown in this PDF Document is generated from our Online Catalog. Please find the complete data in the user's documentation. Our General Terms of Use for Downloads are valid (<http://phoenixcontact.com/download>)



VARIOFACE front adapter, for GE Fanuc PACSystems RX3i, max. 1 x 32 channels can be connected.

The figure shows the version FLKM 50-PA-GE/TKFC/RXI

### Product Features

- Can be plugged onto I/O modules
- Connection via suitable VARIOFACE termination boards
- Transmission of a maximum of 32 channels via a 50-pos. system cable



### Key commercial data

Packing unit	1 pc
Weight per Piece (excluding packing)	140.0 GRM
Custom tariff number	85369010
Country of origin	Germany

### Technical data

#### General

Nominal voltage $U_N$	< 50 V AC
	60 V DC
Max. permissible current	1 A (per path)
	8 A (per connection, supply via separate power supply)
Channels which can be connected	32
Connection type, connector	IDC/FLK pin strip (2.54 mm)
Number of connectors	1
No. of positions, connector	50
Number of positions	50
Mounting position	any

## Front adapters - FLKM 50-PA-GE/TKFC/RXI/IN - 2321486

### Technical data

#### General

Standards/regulations	DIN EN 50178
	IEC 60664
	IEC 62103
Pollution degree	2
Surge voltage category	II

#### Ambient conditions

Ambient temperature (operation)	-20 °C ... 50 °C
Ambient temperature (storage/transport)	-20 °C ... 70 °C

#### Connection data, power supply

Connection method	Pluggable spring-cage connection
Conductor cross section stranded min.	0.2 mm <sup>2</sup>
Conductor cross section stranded max.	2.5 mm <sup>2</sup>
Conductor cross section solid min.	0.2 mm <sup>2</sup>
Conductor cross section solid max.	2.5 mm <sup>2</sup>
Conductor cross section AWG/kcmil min.	24
Conductor cross section AWG/kcmil max	12

#### Supported controller

Controller	GE-FANUC RX3i
- suitable I/O card	IC694MDL660

### Classifications

#### eCl@ss

eCl@ss 4.0	27060306
eCl@ss 4.1	27060306
eCl@ss 5.0	27061801
eCl@ss 5.1	27061801
eCl@ss 6.0	27061801
eCl@ss 7.0	27061801
eCl@ss 8.0	27061801

#### ETIM

ETIM 2.0	EC000237
ETIM 3.0	EC000237
ETIM 4.0	EC000237
ETIM 5.0	EC002584

# Front adapters - FLKM 50-PA-GE/TKFC/RXI/IN - 2321486

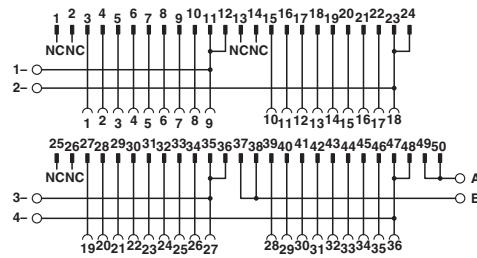
## Classifications

### UNSPSC

UNSPSC 6.01	26121620
UNSPSC 7.0901	26121620
UNSPSC 11	26121620
UNSPSC 12.01	26121620
UNSPSC 13.2	26121620

## Drawings

Circuit diagram



Connection scheme for FLKM 50-PA-GE/TKFC/RXI/IN