



ACR-22-03-G-00.25-S-S1-P-1



ACR-22 SERIES

IP68 SEALED 22 mm PANEL ASSEMBLY

SPECIFICATIONS

For complete specifications see www.samtec.com?ACR-22

Terminal Material:
Brass

Contact Material:
Brass/BeCu

Operating Temp Range:
-40 °C to +105 °C

Housing:

-P: Thermoplastic

-M: Zinc Alloy

RoHS Compliant:

Yes

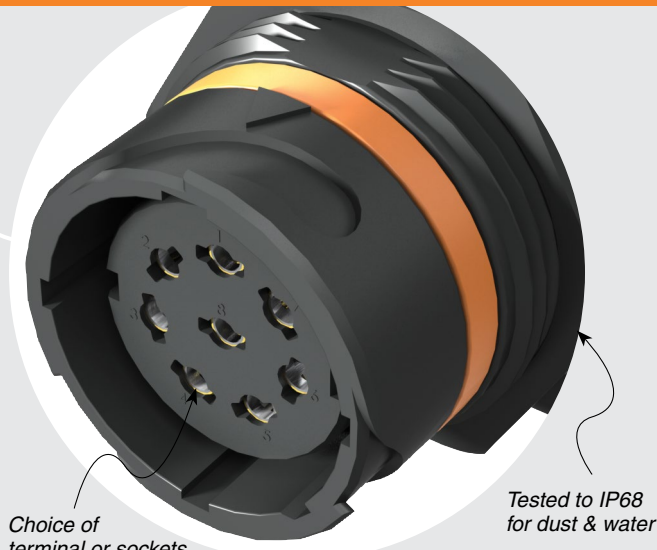
CURRENT RATING		
LEAD STYLE	PINS POWERED	CCC per PIN
-01	30	2.0 A
-02	20	2.3 A
-03	8	8.3 A

For general reference only. See www.samtec.com?ACR-22 for complete test data or contact AccliMate@samtec.com for applications requiring higher current carrying capacity.

Mates with:
ACP-22, ACPK-22



- Easy sealed cable solutions
- Build a standard or flexible custom online
- Calculate performance, current rating, voltage drop
- Live chat with AccliMate™ engineers for custom options
- Variety of shells, pin sizes, signal, power, I/O interfaces
- Assembly and field kits available



Choice of terminal or sockets

Tested to IP68 for dust & water

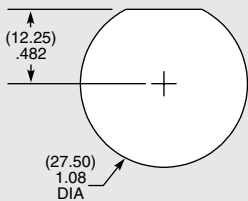
DUST CAPS

- DCA-ACR-22-M-X (Metal)
- DCA-ACR-22-P-X (Plastic)



- Visit sealedio.samtec.com for a complete list of sealed systems

PANEL OPENING



ALSO AVAILABLE (MOQ Required)

- Other assembly lengths
- Contact Samtec.

Note: Some lengths, styles and options are non-standard, non-returnable.

ACR	22	LEAD STYLE	PLATING	LENGTH	END 1	END 2	HOUSING MATERIAL	KEYING OPTIONS												
		<p>-01 = 1.0 mm DIA (30) terminals or sockets (24 AWG)</p> <p>-02 = 1.0 mm DIA (20) terminals or sockets (24 AWG)</p> <p>-03 = 1.5 mm DIA (8) terminals or sockets (16 AWG)</p>	<p>-G = 10 μm (0.25 μm) Gold over 50 μm (1.27 μm) Ni on contact</p>	<p>“XX.XX” = Length in meters (00.25 m min. to 50.00 m max.) Standard lengths</p>	<p>-T = Terminal</p> <p>-S = Socket</p>	<p>-P = Plastic</p> <p>-M = Metal</p>	<p>-1 = Orange, 45°</p>													
							<p>-BC = Blunt Cut</p> <p>-S1 = Connector determined by lead style. (Specify LEAD STYLE from chart)</p>													
								<table border="1"> <thead> <tr> <th>LEAD STYLE</th> <th>-S1 END 2</th> <th>MATES WITH -S1</th> </tr> </thead> <tbody> <tr> <td>-01</td> <td>MMSD (24 AWG)</td> <td>IPL1</td> </tr> <tr> <td>-02</td> <td>MMSD (24 AWG)</td> <td>IPL1</td> </tr> <tr> <td>-03</td> <td>MPSS (16 AWG)</td> <td>MPT</td> </tr> </tbody> </table>	LEAD STYLE	-S1 END 2	MATES WITH -S1	-01	MMSD (24 AWG)	IPL1	-02	MMSD (24 AWG)	IPL1	-03	MPSS (16 AWG)	MPT
LEAD STYLE	-S1 END 2	MATES WITH -S1																		
-01	MMSD (24 AWG)	IPL1																		
-02	MMSD (24 AWG)	IPL1																		
-03	MPSS (16 AWG)	MPT																		