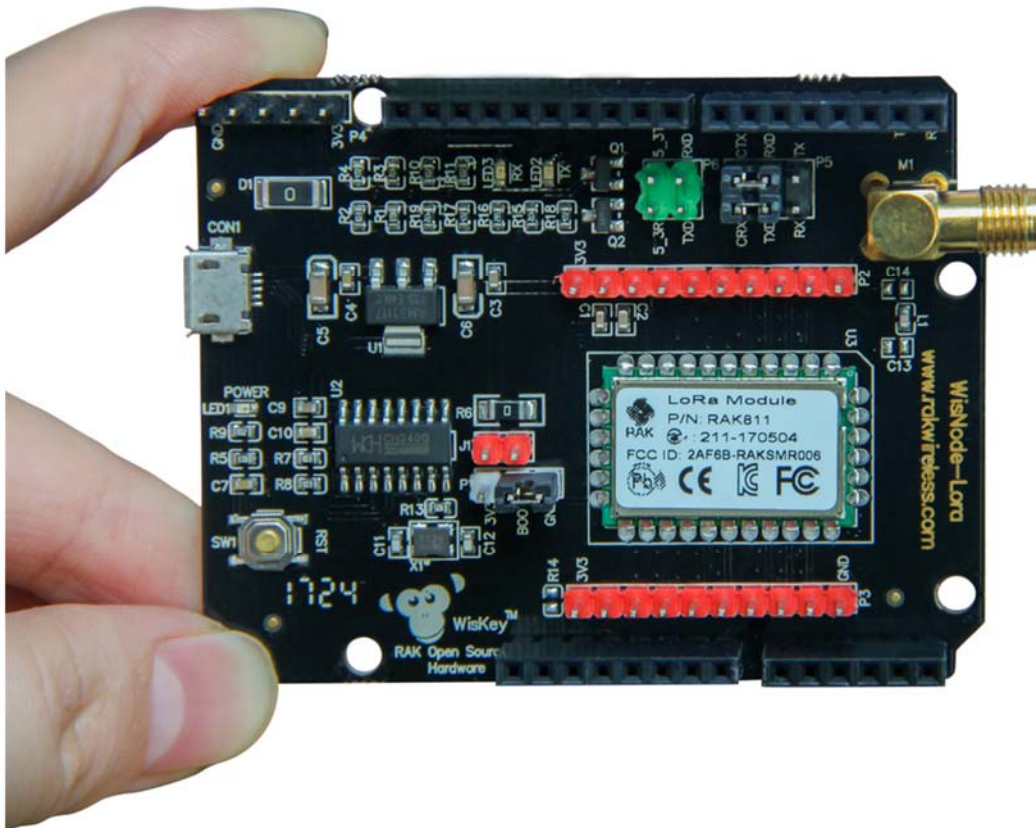




Pi Supply



WisNode LoRa / LoRaWAN Arduino Compatible RAK811 development board and Arduino shield

LoRa Module Development Test Board

RAK811 WisNode LoRa development board, compatible with Arduino.

Optional Frequency

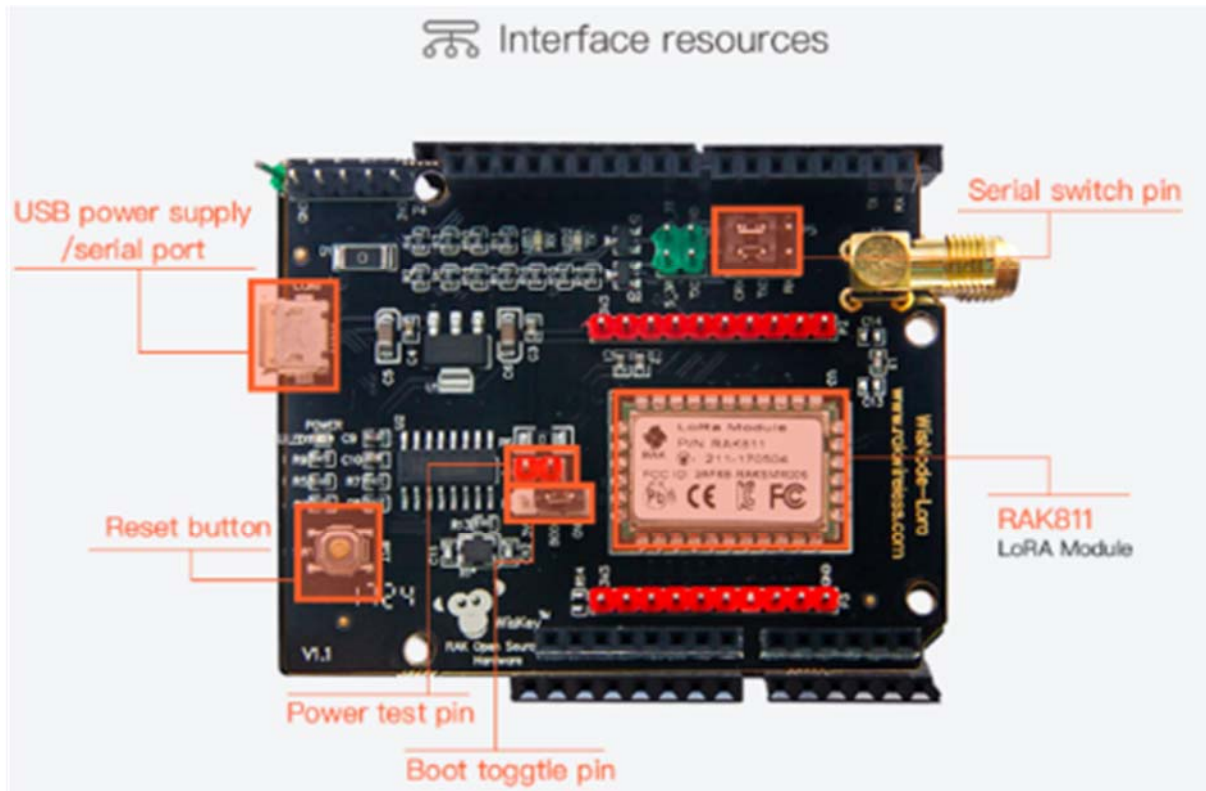
- 868MHz
- 915MHz
-

What's Inside

- WisNode LoRa
- Micro USB Cable
- LoRa Antenna
- Jumper Cap
- Dupont Line



Interface Resources



Best Features

- Low cost
- Works both standalone as well as an Arduino shield
- Easy to start with

