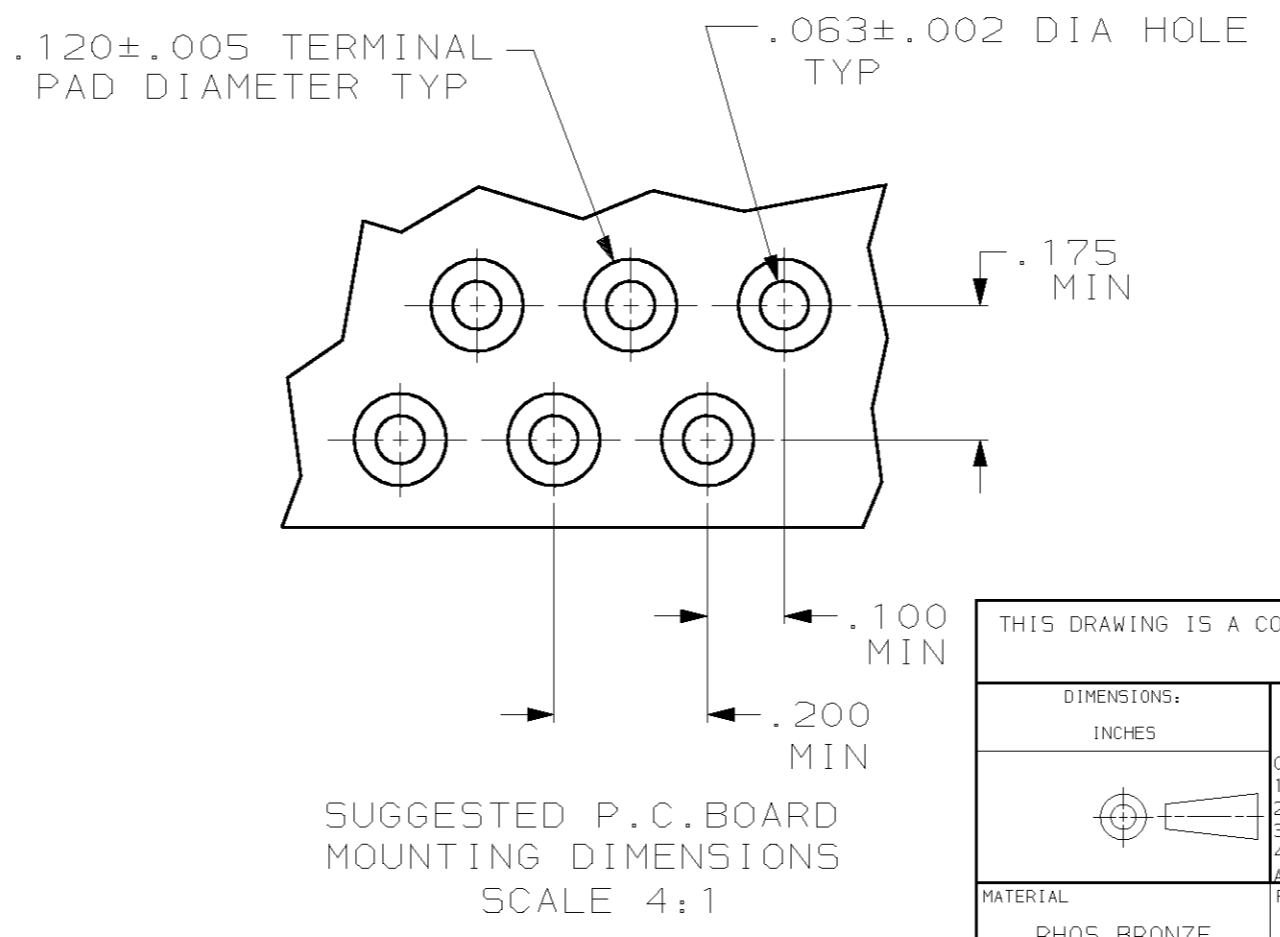
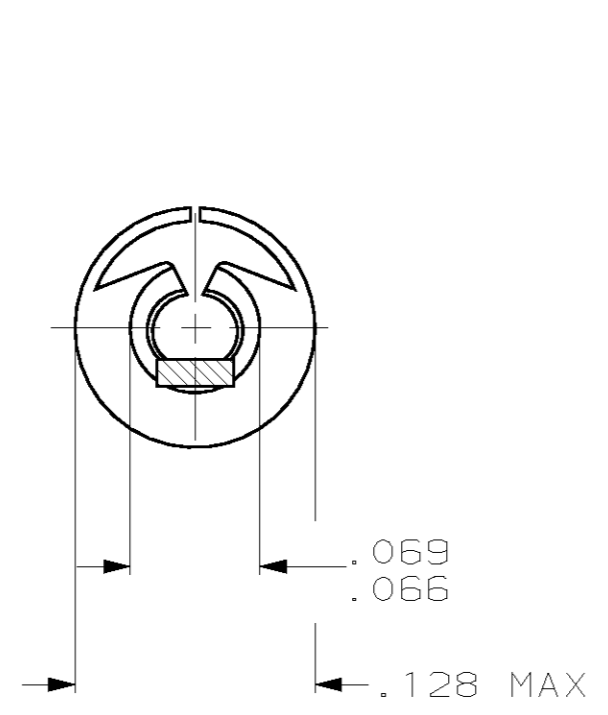
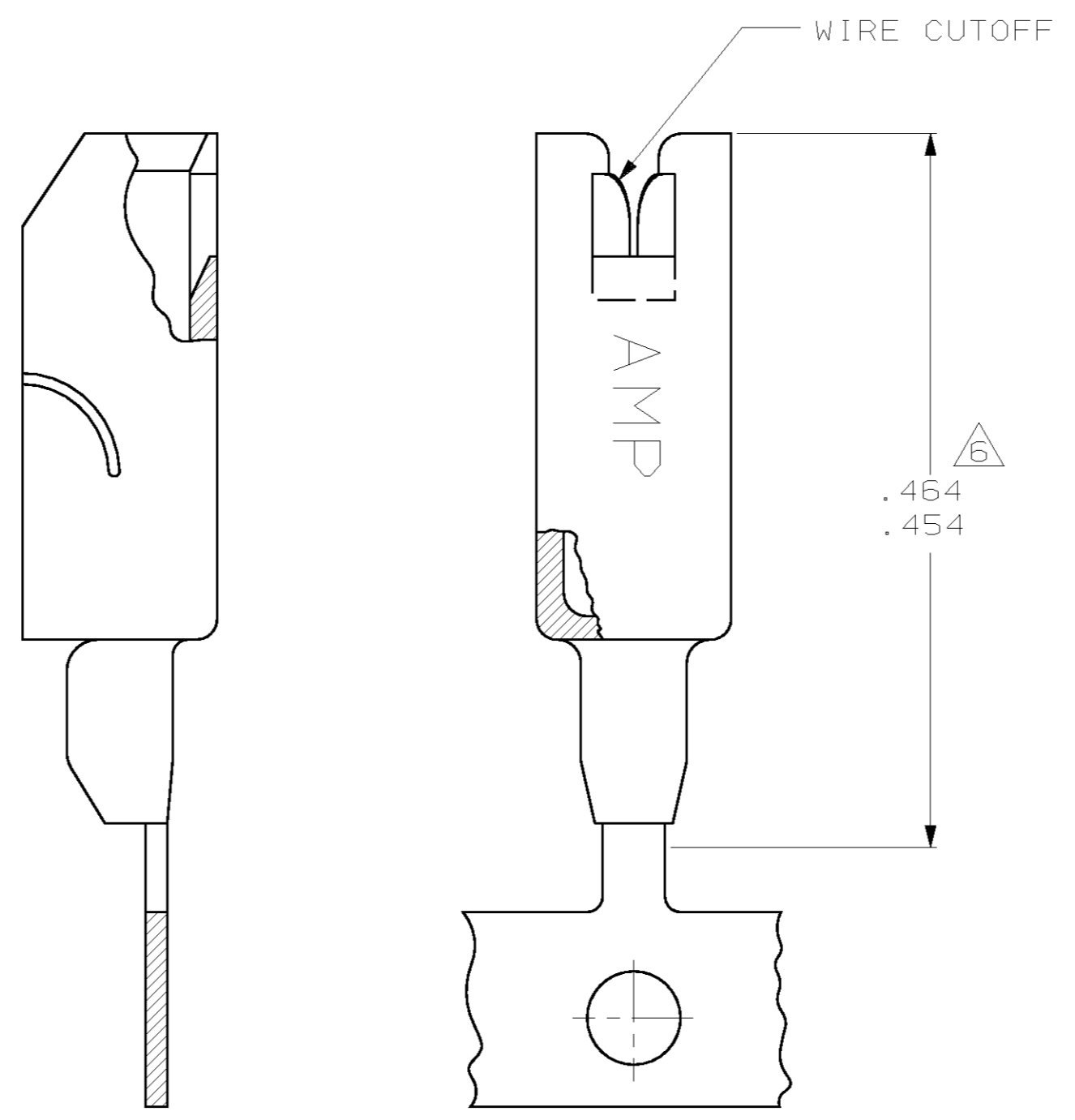
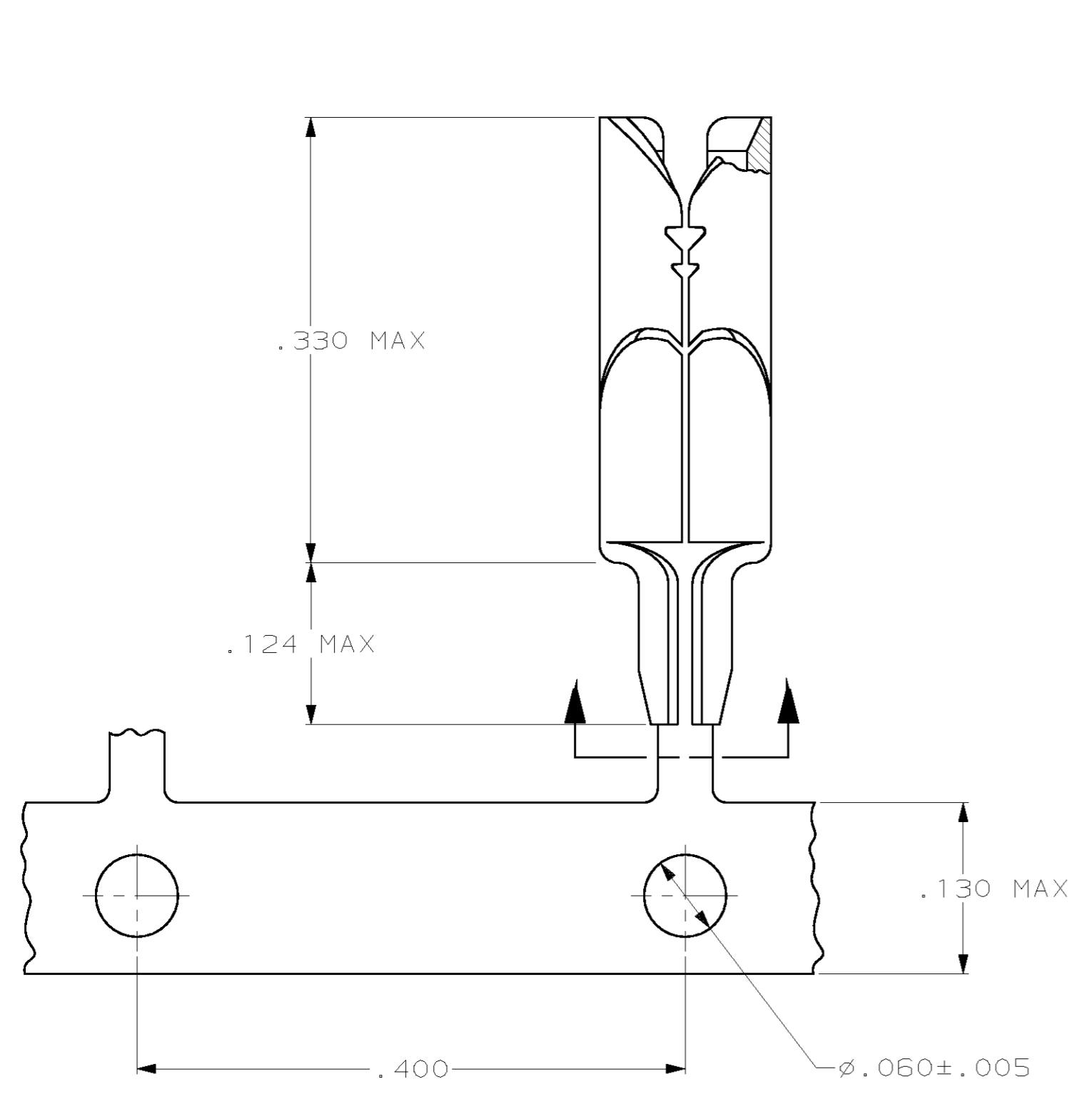


THIS DRAWING IS UNPUBLISHED. RELEASED FOR PUBLICATION  
 BY AMP INCORPORATED, ALL RIGHTS RESERVED.

LOC	DIST	REVISIONS					
		P	LTR	DESCRIPTION	DATE	DWN	APVD
AA	27	A		REL PER 063A-0445-01	03DEC01	JR	EH

- 1 FOR USE IN PRINTED CIRCUIT BOARDS .062/.094 THICK.
- 2 WIRE RANGE : 22-26 AWG SOLID OR STRANDED WIRE. MAXIMUM INSULATION DIA OF .086 IS ACCEPTABLE FOR MOST APPLICATIONS.
- 3 TERMINAL SHALL ACCOMMODATE ONE OR TWO WIRES OF THE SAME TYPE AND WITHIN PLUS OR MINUS ONE WIRE GAGE SIZE. EXAMPLE: 24 AWG MAY BE MIXED WITH EITHER 26 OR 22 AWG.
- 4 USE INSERTION TOOL, P/N 231890-1.
- 5 WHEN USING TEFLON INSULATED WIRES USE 1217675-1.
- 6 CUT-OFF DIMENSION FOR LOOSE PIECE PARTS ONLY.
- 7 ONE LOOSE END STYLE SPLICE ALLOWED PER REEL.
- 8 PREPRODUCTION - FASR REQ.



230549-1	STRIP MOUNTED	AS SHOWN	1217675-1
TERMINAL INSERTION TOOL	DESCRIPTION	PART NO.	
THIS DRAWING IS A CONTROLLED DOCUMENT.		AMP Incorporated Harrisburg, PA 17105-3608	
DWN JR RUTH 10JUL01		NAME	
CHK MS FEHER 10JUL01		TERMINAL, .125 DIA WITH CUTOFF, AMP BARREL	
APVD E HOWARD 10JUL01		SIZE CAGE CODE DRAWING NO RESTRICTED TO	
PRODUCT SPEC		A2 00779 C- 1217675	
APPLICATION SPEC		SCALE 10:1 SHEET 1 OF 1 REV A	
MATERIAL PHOS BRONZE		FINISH PRE-TINNED	
CUSTOMER DRAWING			