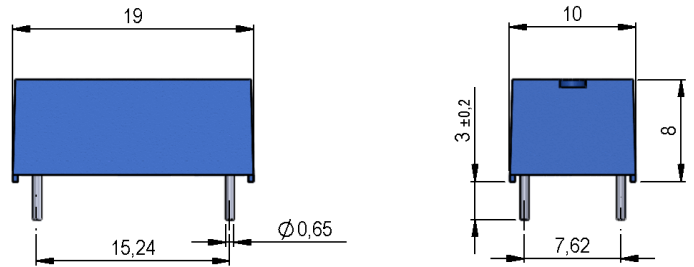


525 Series Optocouplers



- Features: ATEX Optocoupler for Intrinsically Safe Circuits
- Applications: Electronics for Mining, Test & Measurement, Automation Technology
- Markets: Oil & Gas Production, Refinery, Mining, Medical, Test and Measurement, and others

Part Description: **525-03-0-i**

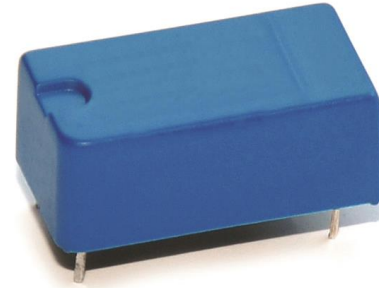
Customer Options		Unit
Coupler Characteristics		
Isolation Voltage Input / Output (min.)	4,000	VDC
Current Transfer Ratio (min.) I _c /I _f CTR (I _f = 10mA)	0.5	
Turn On Time (typ.) T _{on}	5.5	µsec
Turn-Off Time (typ.) T _{off}	4.2	µsec
Collector-Emitter Voltage (max.)	32	VDC
Collector Current I _c (max.)	50	mA
Creeping Distance (min.)	14.5	mm
Air Path Input / Output (min.)	14.5	mm
Insulation Distance Emitter-Detecto (min.)	5	mm
Insulation Resistance Input / Output (min.)	10 ¹²	Ohm
Transmission Frequencies (typ.)	50	kHz

Housing and Material Specifications	
Housing Material	Plastic
Case Color	Blue
Sealing Compound	Polyurethan
Connection Pins	Cu-Ally Tinned
Washability	Fully Sealed

Environmental Data		Unit
Shock Resistance (max.) 1/2 sine wave duration 11ms	50	g
Vibration Resistance (max.)	20	g
Operating Temperature	-40 to 85	°C
Storage Temperature	-40 to 100	°C
Soldering Temperature (max.) 5 sec. max.	260	°C

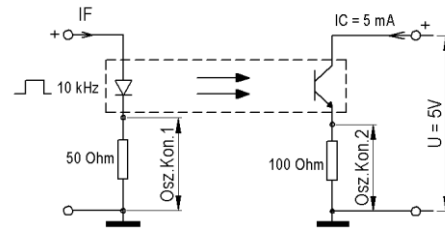
Handling Instructions	
➤	It is advised that normal static precautions be taken in handling and assembly of this component to prevent damage and/or degradation which may be induced by ESC.

525 Optocoupler



Test Circuit and Layout

Test Circuit



Layout

