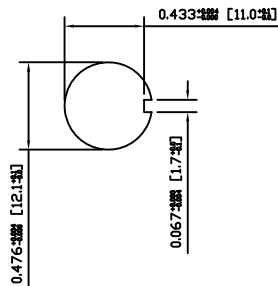
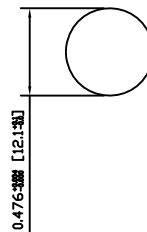


SUGGESTED PANEL CUTOUT



ALTERNATE PANEL CUTOUT



MATERIALS

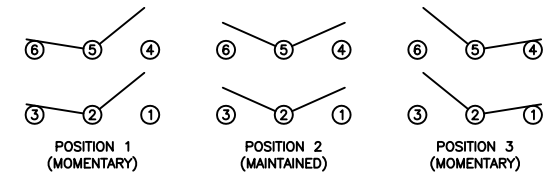
- BODY:
Phenolic, UL94 V-0
- ACTUATOR:
Nickel Plated Brass
- BUSHING:
Nickel Plated Brass
- HOUSING:
Stainless Steel
- HARDWARE:
Nickel Plated Steel
- FUNCTION PLATE:
Stainless Steel
- SPACER PLATE:
Laminate Board
- SPRING:
Steel
- PLUNGER:
Nylon
- MOBILE CONTACT:
Silver Plated Copper
- MOBILE CONTACT PIVOT:
Silver Plated Copper
- CONTACTS:
Silver Alloy Clad Copper
- TERMINALS:
Brass

SPECIFICATIONS

- FUNCTION:
2P2T ON-OFF-(ON)
- RATINGS:
ANSI/UL1054 and CAN/CSA C22.2 No.55 (E194579):
20A 125VAC [cURus]
15A 277VAC [cURus]
1.5HP 125/277VAC [cURus]
- CONTACT RESISTANCE:
Initial: 50mΩ Max. at 50VAC
- INSULATION RESISTANCE:
800MΩ Min. at 500VDC
- DIELECTRIC STRENGTH:
1,500VAC for 1 Minute
- OPERATING LIFE:
6,000 Cycles [cURus]
- TEMPERATURE:
Operating: -20°C to 85°C [cURus]
- APPROVALS:



SCHEMATIC



ACTUATOR	B	10/11/16	CAB
BODY	B	10/11/11	CAB
MATERIALS	A	09/06/03	CAB
SPECIFICATIONS	A	09/06/03	CAB
REFERENCE	REV.	DATE	BY

THE INFORMATION CONTAINED IN THIS DOCUMENT IS PROPRIETARY TO E-SWITCH AND IS NOT TO BE COPIED OR TRANSFERRED

B	CORRECTED PANEL CUTOUT DIMENSIONS	19380	10/11/16	CAB
A	INITIAL RELEASE	19333	10/09/29	CAB
REV.	DESCRIPTION	PCR	DATE	DRAWN BY

DIMENSIONS	
INCHES [MILLIMETERS]	
GENERAL TOLERANCES	
0.000~0.236: ±0.004 [0~6: ±0.1]	
0.236~1.181: ±0.012 [6~30: ±0.3]	
1.181~4.724: ±0.020 [30~120: ±0.5]	
SCALE	PROJECTION
DRAWING NOT TO SCALE	1st Angle

TITLE	
ST24JD00	
ITEM NUMBER	DATE
34-ST24JD00	NOVEMBER 16, 2010
REVISION	
B	