

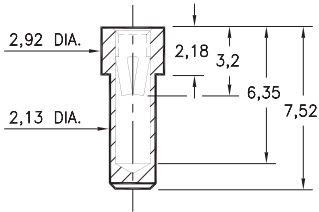
PIN RECEPTACLES

FOR 0,81 - 1,17 DIAMETER PINS

8838

8838-0-15-XX-34-XX-10-0

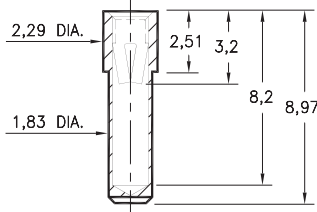
Solder mount in 2,18 min. mounting hole



3100

3100-0-15-XX-34-XX-10-0

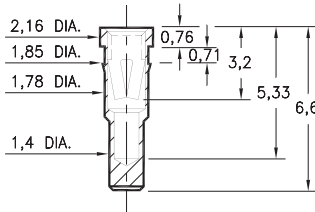
Solder mount in 1,88 min. mounting hole



8853

8853-0-15-XX-34-XX-10-0

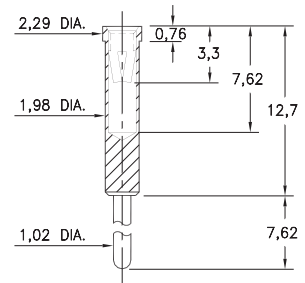
Press-fit in 1,8 mounting hole



6800

6800-0-15-XX-34-XX-04-0

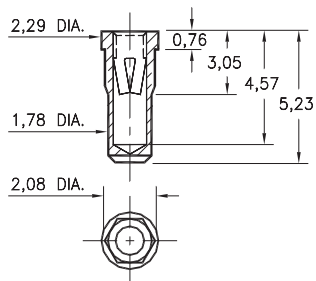
Solder mount in 2,03 min. mounting hole



0739

0739-0-15-XX-34-XX-10-0

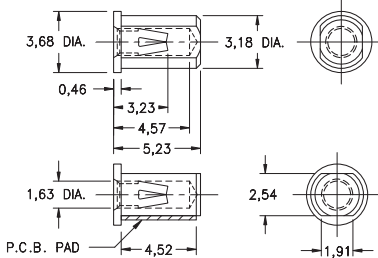
Hex press-fit in 1,98 plated through-hole



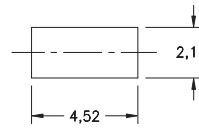
8206

8206-0-15-XX-34-XX-40-0

Surface mount, board edge
Also available on 16mm wide carrier tape:
Packaged Vertically 1,400 parts per 330mm reel
Order as: 8206-0-57-XX-34-XX-40-0



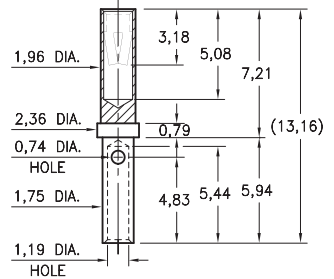
P.C.B. Layout



0720

0720-0-33-XX-34-XX-10-0

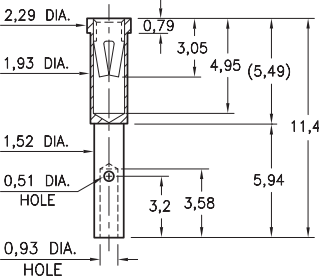
Wire crimp termination. Accepts wire sizes 20 AWG Max. / 24 AWG Min.



4130

4130-0-33-XX-34-XX-10-0

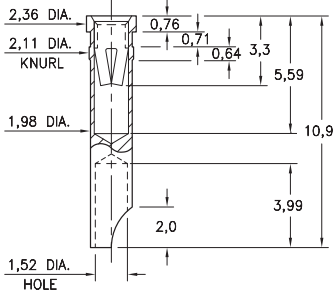
Wire crimp termination. Accepts wire sizes 22 AWG Max. / 26 AWG Min.



5084

5084-0-18-XX-34-XX-10-0

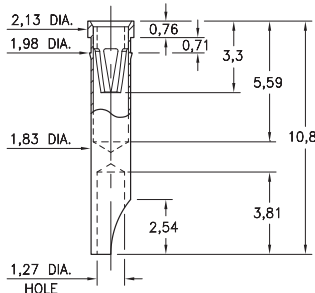
Press-fit in 2,06 mounting hole



0740

0740-0-18-XX-34-XX-10-0

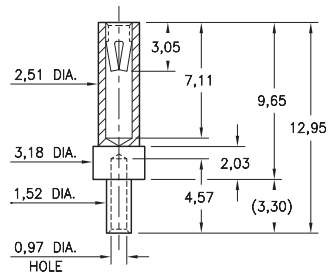
Press-fit in 1,91 mounting hole
For wire sizes up to 20 AWG



8731

8731-0-19-XX-34-XX-10-0

Wire crimp termination. Accepts wire sizes 22 AWG Max. / 26 AWG Min.



SPECIFICATIONS:

Shell Material: Brass Alloy 360, 1/2 Hard

Contact Material: Beryllium Copper Alloy 172, HT

Dimensions: Millimeters

Tolerances On: Lengths: ± 0,13
Diameters: ± 0,051
Angles: ± 2°



ORDER CODE: **XXXX - X - XX - XX - 34 - XX - XX - 0**

BASIC PART #

SPECIFY SHELL FINISH:

- 01 5,08µm TIN/LEAD OVER NICKEL
- ◆ 80 5,08µm TIN OVER NICKEL (RoHS)
- ◆ 15 0,25µm GOLD OVER NICKEL (RoHS)

SPECIFY CONTACT FINISH:

- 01 5,08µm TIN/LEAD OVER NICKEL
- ◆ 80 5,08µm TIN OVER NICKEL (RoHS)
- ◆ 27 0,76µm GOLD OVER NICKEL (RoHS)

SELECT CONTACT:

#34 CONTACT (DATA ON PAGE 258)

(For alternate contact choices, see group E on page 248)

