

Tera Term Terminal Emulator

Installation Guide

UG1036 (v1.0) February 12, 2014

Revision History

The following table shows the revision history for this document.

Date	Version	Revision
02/12/2014	1.0	Initial Xilinx release.

Table of Contents

Tera Term Terminal Emulator Installation Guide

Overview	4
Download and Install Tera Term Terminal Emulator	4

Appendix A: Additional Resources and Legal Notices

Xilinx Resources	6
Solution Centers	6
References	6
Please Read: Important Legal Notices	6

Tera Term Terminal Emulator Installation Guide

Overview

This guide shows how to download and set up a Tera Term terminal emulator. The Tera Term emulator is used for demonstration purposes. Any other terminal emulator can be used, but Tera Term is recommended, as it has been verified.

Download and Install Tera Term Terminal Emulator

1. Go to the [Tera Term](#) download page.
2. Accept the Tera Term license agreement and click the download arrow to download the executable file. See [Figure 1](#).

Note: Versions shown in figures might not match the latest version available.

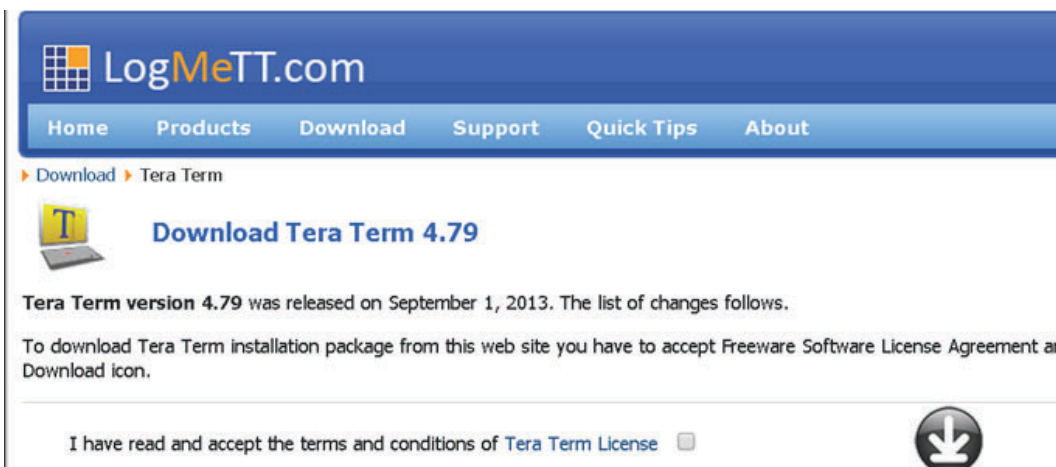


Figure 1: Tera Term Download Page

3. Open the .exe file and click **Run**. You might see some security warnings on your PC. Click **Run**, if applicable. The Tera Term Setup Wizard appears, as shown in [Figure 2](#).

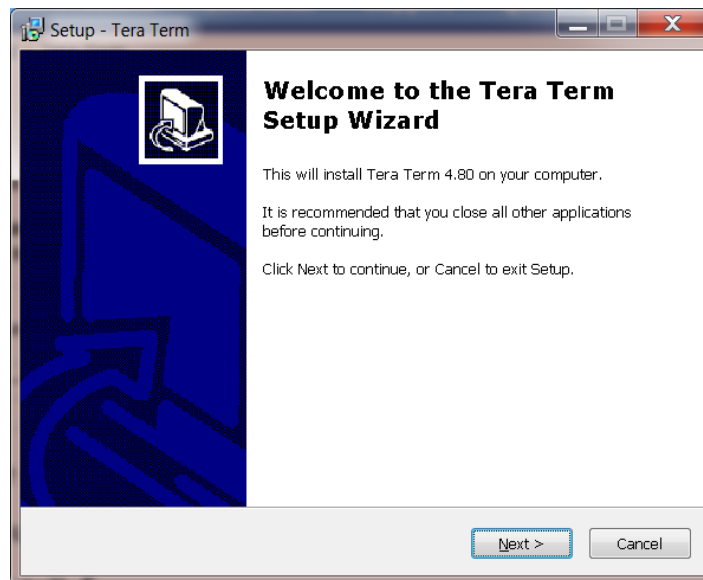


Figure 2: Tera Term Setup Wizard

4. Go through the setup. Agree to the license agreement and do not change any of the settings that appear in subsequent dialog boxes.
5. Click **Install**. Tera Term is installed and an icon is placed on your desktop.
6. Continue with the instructions in the appropriate quick start guide. At the appropriate time, you will be directed on the configuration of the terminal settings.

Additional Resources and Legal Notices

Xilinx Resources

For support resources such as Answers, Documentation, Downloads, and Forums, see [Xilinx Support](#).

For a glossary of technical terms used in Xilinx documentation, see the [Xilinx Glossary](#).

Solution Centers

See the [Xilinx Solution Centers](#) for support on devices, software tools, and intellectual property at all stages of the design cycle. Topics include design assistance, advisories, and troubleshooting tips.

References

These Xilinx documents provide supplemental material useful with this guide:

1. See the appropriate quick start guide for your Xilinx product.
2. *Silicon Labs CP210x USB-to-UART Installation Guide* ([UG1033](#))

These external websites provide supplemental material useful with this guide:

3. [CP210x USB-to-UART Bridge VCP Drivers](#)
 4. [Tera Term](#) download page
-

Please Read: Important Legal Notices

The information disclosed to you hereunder (the "Materials") is provided solely for the selection and use of Xilinx products. To the maximum extent permitted by applicable law: (1) Materials are made available "AS IS" and with all faults, Xilinx hereby DISCLAIMS ALL WARRANTIES AND CONDITIONS, EXPRESS, IMPLIED, OR STATUTORY, INCLUDING BUT NOT LIMITED TO WARRANTIES OF

MERCHANTABILITY, NON-INFRINGEMENT, OR FITNESS FOR ANY PARTICULAR PURPOSE; and (2) Xilinx shall not be liable (whether in contract or tort, including negligence, or under any other theory of liability) for any loss or damage of any kind or nature related to, arising under, or in connection with, the Materials (including your use of the Materials), including for any direct, indirect, special, incidental, or consequential loss or damage (including loss of data, profits, goodwill, or any type of loss or damage suffered as a result of any action brought by a third party) even if such damage or loss was reasonably foreseeable or Xilinx had been advised of the possibility of the same. Xilinx assumes no obligation to correct any errors contained in the Materials or to notify you of updates to the Materials or to product specifications. You may not reproduce, modify, distribute, or publicly display the Materials without prior written consent. Certain products are subject to the terms and conditions of Xilinx's limited warranty, please refer to Xilinx's Terms of Sale which can be viewed at <http://www.xilinx.com/legal.htm#tos>; IP cores may be subject to warranty and support terms contained in a license issued to you by Xilinx. Xilinx products are not designed or intended to be fail-safe or for use in any application requiring fail-safe performance; you assume sole risk and liability for use of Xilinx products in such critical applications, please refer to Xilinx's Terms of Sale which can be viewed at <http://www.xilinx.com/legal.htm#tos>.

Automotive Applications Disclaimer

XILINX PRODUCTS ARE NOT DESIGNED OR INTENDED TO BE FAIL-SAFE, OR FOR USE IN ANY APPLICATION REQUIRING FAIL-SAFE PERFORMANCE, SUCH AS APPLICATIONS RELATED TO: (I) THE DEPLOYMENT OF AIRBAGS, (II) CONTROL OF A VEHICLE, UNLESS THERE IS A FAIL-SAFE OR REDUNDANCY FEATURE (WHICH DOES NOT INCLUDE USE OF SOFTWARE IN THE XILINX DEVICE TO IMPLEMENT THE REDUNDANCY) AND A WARNING SIGNAL UPON FAILURE TO THE OPERATOR, OR (III) USES THAT COULD LEAD TO DEATH OR PERSONAL INJURY. CUSTOMER ASSUMES THE SOLE RISK AND LIABILITY OF ANY USE OF XILINX PRODUCTS IN SUCH APPLICATIONS.

© Copyright 2014 Xilinx, Inc. Xilinx, the Xilinx logo, Artix, ISE, Kintex, Spartan, Virtex, Vivado, Zynq, and other designated brands included herein are trademarks of Xilinx in the United States and other countries. All other trademarks are the property of their respective owners.