

5

4

3

2

1



Description: 95 series solder panel & cable mount high density D-Sub connectors

Part No: 40-9515HDM

Application: 95 Series D-Sub Connector

Crimp Tool: N/A

Impedance: N/A

Frequency Range: N/A

Material: Shell Steel, Tin plated

Insulator PBT+30% Fiber-grass

UL94-V0 White

Contact Copper-alloy, Gold-flashed plated

RoHS Compliance: Yes

Technical Detail: N/A

DRAWING NO.
40-9515HDM-CUST(SEE TABLE I)

REVISIONS

| OFFICIAL RELEASE | | | | | |
|------------------|----------|---|---|---|---|
| 01 | 03-09-11 | J | J | D |  |

D

D

C

C

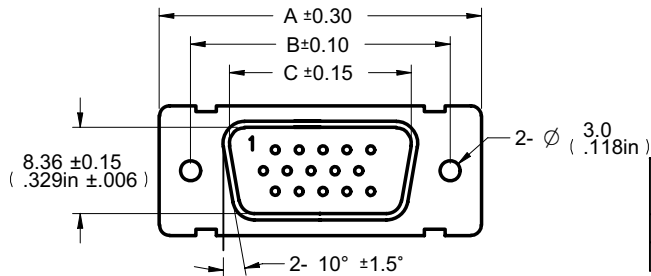
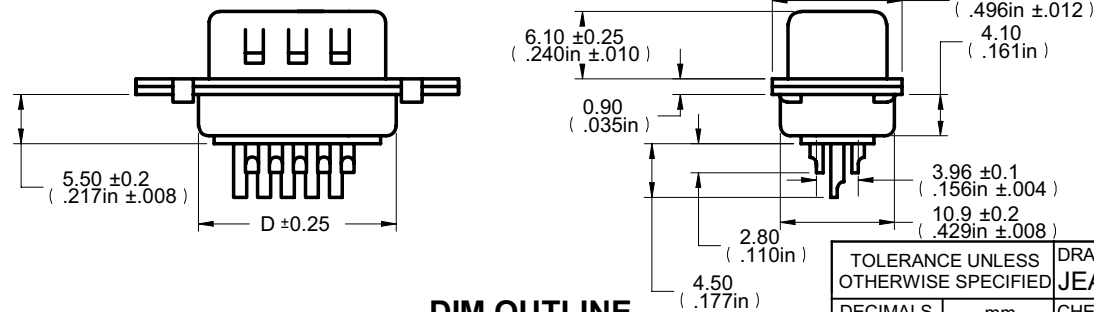


TABLE I

| Part Number | Description | A (mm) | B (mm) | C (mm) | D (mm) |
|-------------|-------------------------|--------|--------|--------|--------|
| 40-9515HDM | MALE- PLUG, SOLDER TYPE | 30.80 | 24.99 | 16.92 | 19.20 |
| 40-9526HDM | MALE- PLUG, SOLDER TYPE | 39.20 | 33.32 | 25.25 | 27.70 |

B

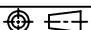
B



DIM OUTLINE

受控 CONTROLLED DOCUMENT

| 编号 P/N | 40-9515HDM-CUST (SEE TABLE 1) | 版本 Rev | 01 | 日期 Rel'd Date | Jul11,11 |
|--------|----------------------------------|--------|----|---------------|----------|
|--------|----------------------------------|--------|----|---------------|----------|

| | | | |
|--------------------------------------|--------|-------------|---|
| TOLERANCE UNLESS OTHERWISE SPECIFIED | | DRAWN BY | DATE |
| DECIMALS | mm | JEAN.JIN | 03-09-11 |
| X | ± 0.5 | CHECKED BY | DATE |
| X.X | ± 0.3 | JEAN.JIN | 03-09-11 |
| X.XX | ± 0.15 | APPROVED BY | DATE |
| ANGLES | ± 0.5° | DONALD | 03-09-11 |
| | U/M | mm |  |

CUSTOMER COPY



TITLE
95 SERIES SOLDER PANEL & CABLE MOUNT
HIGH DENSITY D-SUB CONNECTORS

SHEET
1 OF 1

DRAWING NO.
40-9515HDM-CUST
(SEE TABLE I)

SIZE
A

THIS DRAWING WAS PRODUCED BY COMPUTER,
DO NOT SCALE DRAWING OR UPDATE MANUALLY.

5

4

3

2

1

A

A

SOLID EDGE RESELLER.COM