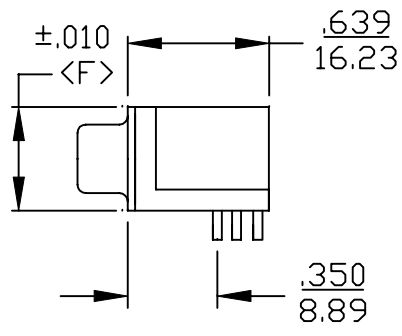
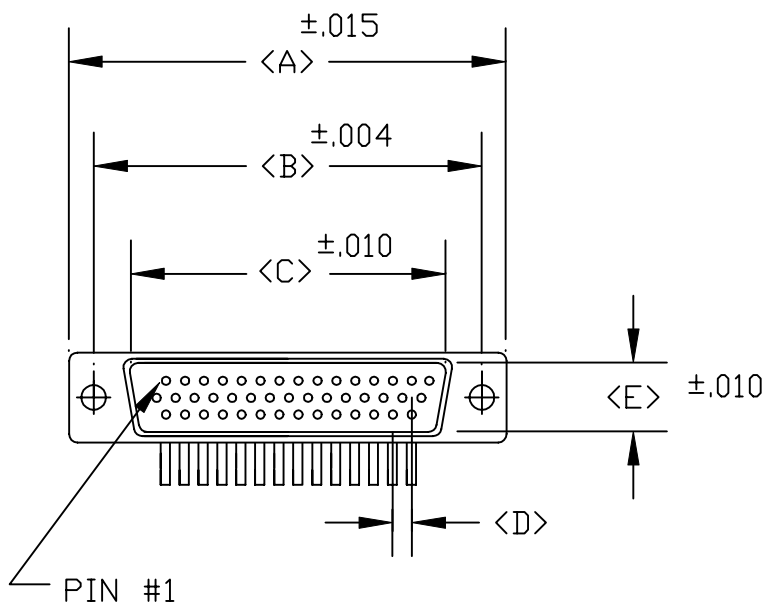


DESCRIPTION: **HIGH DENSITY MALE RIGHT ANGLE**

POS.	A	B	C	D	E	F
15	1.213	0.984	0.666	0.090	0.329	0.496
	30.80	24.99	16.92	2.29	8.36	12.60
26	1.543	1.312	0.994	0.090	0.329	0.496
	39.19	33.32	25.25	2.29	8.36	12.60
44	2.087	1.852	1.534	0.090	0.329	0.496
	53.00	47.04	38.96	2.29	8.36	12.60
62	2.740	2.500	2.181	0.095	0.329	0.496
	69.60	63.50	55.42	2.41	8.36	12.60



181-XXX-112-XX1


SERIES _____
 POSITIONS _____
 015
 026
 044
 062
 GENDER _____
 1 = MALE
 TERMINATION _____
 1 = DIP SOLDER
 SHELL PLATING _____
 2 = TIN
 HARDWARE OPTIONS _____
 00 = NO HARDWARE
 16 = .120"Ø/INSIDE GRND STRAPS
 17 = 4-40 INSERTS/INSIDE GRND STRAPS
 18 = 4-40 SCREWLOCKS/INSIDE GRND STRAPS
 43 = .120"Ø/METAL SHELL
 45 = 4-40 INSERTS/METAL SHELL
 48 = 4-40 SCREWLOCKS/METAL SHELL
 53 = 4-40 INSERT/BOARD LOCKS
 56 = 4-40 SCREWLOCKS/BOARDLOCKS
 PLATING OPTIONS _____
 1 = GOLD FLASH ENTIRE CONTACT

ELECTRICALS:

CURRENT RATING: 2 AMPS
 CONTACT RESISTANCE: 15 mOHMS MAX.
 INSULATOR RESISTANCE: 1000MOHMS MIN.
 VOLTAGE: 500V FOR 1 MINUTE
 TEMPERATURE: -50° TO +100°

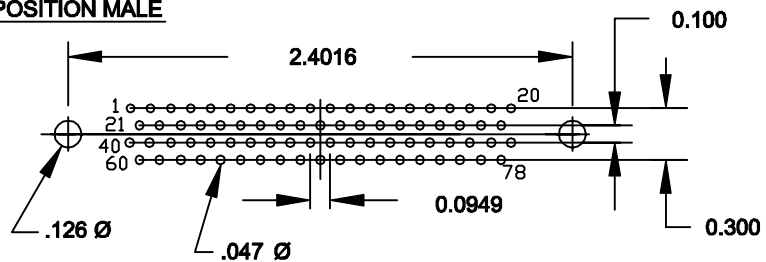
MATERIALS:

SHELL: STEEL, TIN PLATED
 INSULATOR: PBT - BLACK (UL-94-VO)
 CONTACTS: BRASS - GOLD FLASH ENTIRE CONTACT

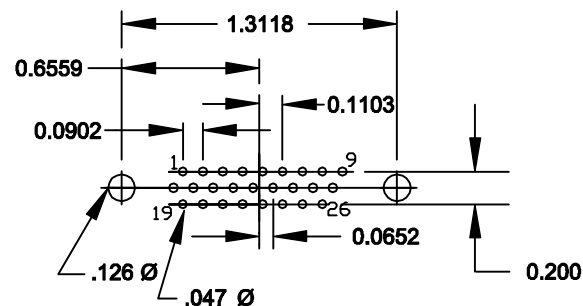
	THESE DRAWINGS AND SPECIFICATIONS ARE THE PROPERTY OF NorComp AND SHALL NOT BE REPRODUCED, COPIED OR USED AS THE BASIS FOR THE MANUFACTURE OR SALE OF APPARATUS WITHOUT WRITTEN PERMISSION.		DRAWN: PAM JENKINS	DATE: 8-19-99
	<h1>NorComp</h1>			CHECKED:
SCALE:				SHEET OF
			DWG NO. 181-XXX-112-XX1	

DESCRIPTION: HIGH DENSITY RIGHT ANGLE MALE FOOTPRINT

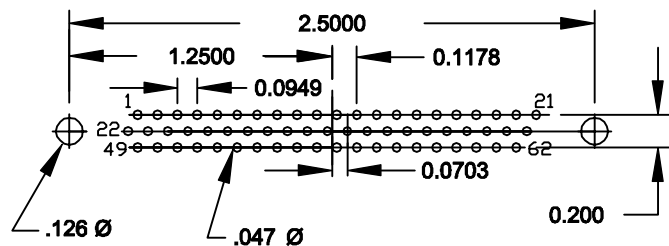
78 POSITION MALE



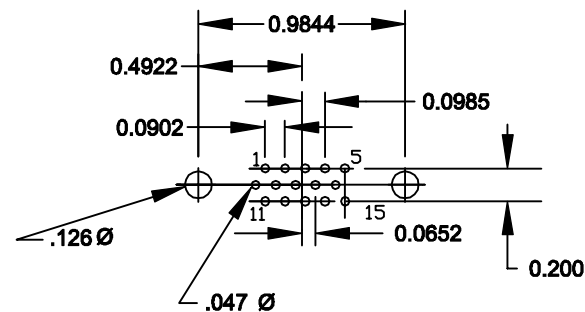
26 POSITION MALE



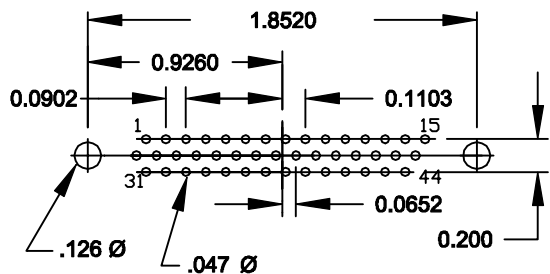
62 POSITION MALE




15 POSITION MALE



44 POSITION MALE



	THESE DRAWINGS AND SPECIFICATIONS ARE THE PROPERTY OF NorComp AND SHALL NOT BE REPRODUCED, COPIED OR USED AS THE BASIS FOR THE MANUFACTURE OF SALE OF APPARATUS WITHOUT WRITTEN PERMISSION.		DRAWN: PAM JENKINS	DATE: 10-29-01
			CHECKED:	DATE:
<h1>NorComp</h1>		SCALE:	SHEET 1 OF 1	REV 3
		DWG NO. HIGH DENSITY RIGHT ANGLE MALE FOOTPRINT		