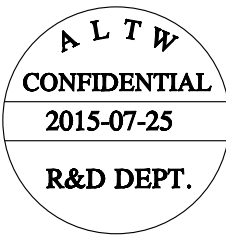
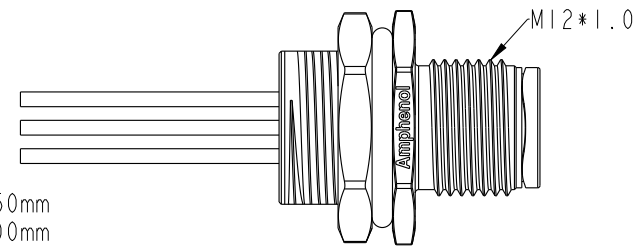
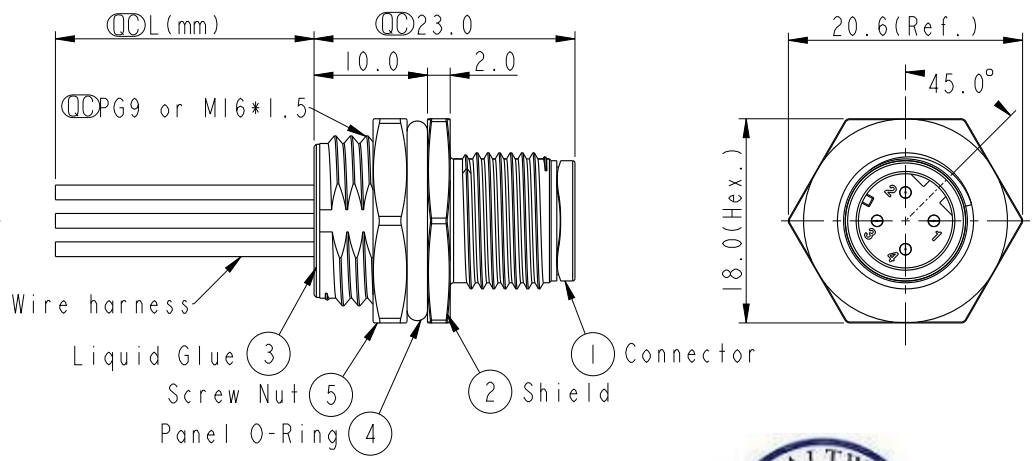
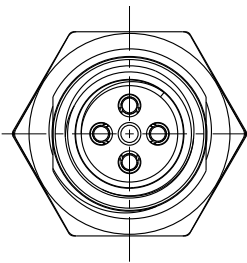
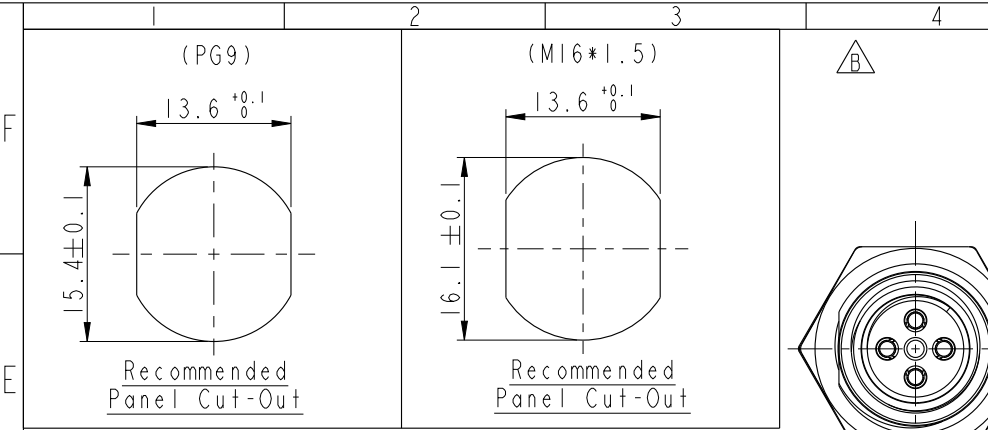
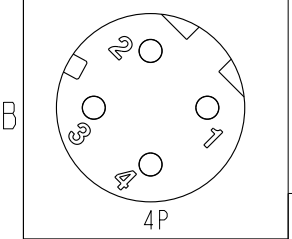


THIS DOCUMENT IS SUBJECT TO CHANGE WITHOUT NOTICE. IT IS CONFIDENTIAL AND A PROPERTY OF Amphenol LTW. DISCLOSURE TO THIRD PARTY HAS TO BE AUTHORIZED BY Amphenol LTW.

REV.	ECN NO.	DATE	SIGN	DESCRIPTION
B	LE31580018-019	2015-07-25	Yulong_wang	Change to Share Drawing.



4	Black	黑
3	Blue	藍
2	White	白
1	Brown	棕
Pin #	Wire	
Pin Out		



M 12D - 04 P M M C - S H 8 X XX

12D: D-Code
 04: 4Pin
 P: Panel (板端)
 M: Male Connector (公座)
 M: Male Pin (公Pin)
 C: Crimp Type (打端式)
 S: Screw (螺紋式)

15: 150mm
 30: 300mm
 50: 500mm
 A0: 1000mm
 A5: 1500mm
 Wire Length (L): 150~1500mm

B: PG9
 C: M16*1.5

8: IP68 (防水等級68)

H: Rear Fasten (后鎖式/Enclosure Front Mount)

- Note:
- * \varnothing Important Dimension.
 - * Waterproof Rate: IP68.
 - * Housing: Nylon+GF, Black.
 - * Male Pin: Copper Alloy, Gold Plated.
 - * Shield: Zinc Alloy, Nickel Plated.
 - * Screw Nut: Zinc Alloy, Nickel Plated.
 - * Panel O-Ring: Viton, Black.
 - * Wire harness: UL1061
 - * Rated Voltage: 250V dc. or ac.
 - * Rated Current: 4A
 - * Operating Temperature: -25~85°C
 - * For Panel Thickness Max 4.5mm.
 - * Recommended Nut Torque: 4-6 Kgf.cm.
 - * Wire harness Tolerance: 150~300 ±15mm
 301~1000 ±20mm
 Over 1000 ±40mm

Pin Assignments Front View	4P	UL1061	22	M12D-04PMMC-SH8BXX M12D-04PMMC-SH8CXX
	Contacts	Wire harness	AWG	Item No.

UNIT: mm		TITLE M12 D-Code Male Conn. Panel Rear With Wire harness		
TOLERANCE .X ±0.25 .XX ±0.1 .XXX ±0.05 ANGLES ±1°	SCALE 2:1	SIZE A4	SHEET 1 OF 1	REV. B
	WC-REV. A.5	\varnothing : Inspection item		

Amphenol LTW
 安費諾亮泰企業股份有限公司

ITEM NO.	DRAWN BY	DATE
	Yulong_wang	2015-07-25
DWG NO.	CHECKED BY	DATE
M12D-04PMMC-SH8XXX	Cary	2015-07-25
CUSTOMER	APPROVED BY	DATE
ALTW	Jerry	2015-07-25